

**Model CS FILTRATION SYSTEM WITH CYCLONE SEPARATOR**



CS-MS-4T

**Increased rate of removing impurities in coolant by magnet & cyclone!**

[Application]

Suitable for efficiently collecting valuable sludge of weak magnetic and nonmagnetic materials.

[Features]

- The cyclone separator enables it collect nonmagnetic materials.
- Collected materials can be dehydrated by the dehydration function.
- A filter collection type dehydration container that is easy to handle is employed.
- The twin-tub type tank construction reduces the amount of impurities that enter the clean tank.

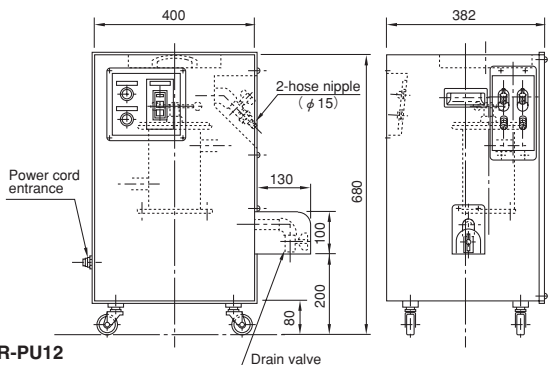
Model	Processing Capacity	Dimensions			Tank Capacity	Power Source	Output			Remarks
		Width	Depth	Height			Cyclone pump	Supply pump	Magclean	
CS-MS-4T	40L/min	1200	800	1300	180L	3-phase 200 VAC, 50/60 Hz 3-phase 220 VAC, 60 Hz	200/220VAC 0.75kW	3-phase 200 VAC 50/60Hz 100W	3-phase 200 VAC 50/60Hz 25W	Magclean included
CS-4T		(47.2)	(31.5)	(51.1)			—		Magclean not included	

**Model HSR-PU MAGNETIC PREFILTER WITH PUMP**

**Extended Life! Revolution in Filtering for Wire Electric Discharge Machines!**



HSR-PU12



[Application]

This prefilter collects fine iron powder in machining fluid during fluid circulation inside the machining liquid tank of wire electric discharge machines to prolong the service life of filters. This can also be used for honing machines and hydraulic circuits (under no pressure).

[Features]

- This prefilter has a pump and therefore can be started simply by connecting hoses (two hoses) to a machining liquid tank. This can be installed in any place and handled easily.
- The powerful magnetic force of a rare earth magnet improves the sludge collecting rate.
- The safe construction with the powerful magnet section secured firmly facilitates cleaning.
- The built-in integrating timer tells when to clean.

■ Model : HSR-PU12 ■ Processing amount: Approx. 1.5 liters/min.  
 ■ Pump rating: 3-phase, 200/220 VAC, 50/60 Hz, 200W ■ Weight: Approx. 60 kg

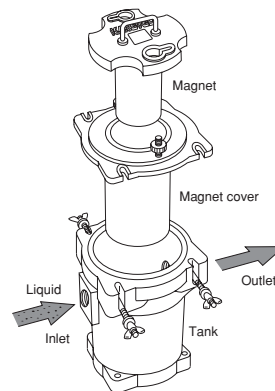
**Caution:** For use of the prefilter for kerosene machining fluids, please contact us.

**Model HS MAGNETIC PREFILTER**



HS-17

Magnet unit with sludge adhering pulled out of the tank.



[Application]

This prefilter removes fine iron powder from machining liquid discharged from a wire electric discharge machine (WEDM). This can also be used for honing machines and hydraulic circuits (under no pressure). Install this prefilter at a point between a wire electric discharge machine and a pump unit.

[Features]

- By roughly removing fine iron powder from machining fluid with the powerful magnet as a pretreatment, the service life of the paper filter, for example, becomes two times longer.
- The prefilter collects impurities as well as fine iron powder. Consequently, the paper filter to use may be of coarser type than that of the straight inflow.
- The duplex construction facilitates removal of fine iron powder.

Model	Dimensions	Hose Connection	Mass
HS-17	175 (6.88) D x 200 (7.87) W x 230 (9.05) H	1 1/2	12kg/26 lb

※Hose nipple 1-1/2 (telescopic, OD φ38) is optional.

MAGNETIC TOOLS & EQUIPMENT FOR MIDD OPERATION  
 LIFTING MAGNET  
 MAGBORE\*  
 CHIP & SLUDGE CONVEYANCE EQUIPMENT

ENVIRONMENTAL EQUIPMENT  
 MAGNETIZER AND DEMAGNETIZER  
 MAGNETIC EQUIPMENT FOR CONVEYANCE  
 MAGNETIC SEPARATORS

POWERFUL MAGNETIC SEPARATORS  
 MEASURING TOOLS  
 MEASURING INSTRUMENTS  
 MAGNETIC MATERIALS