

**Model EP-QD** DEMAGNETIZING FUNCTION-EQUIPPED PERMANENT ELECTROMAGNETIC CHUCK FOR CUTTING

**Weakness of checker board pattern type permanent electromagnetic chucks overcome!**

- Environmentally friendly
- Power saving
- Minimal heat generation

Chuck controller required additionally



EP-QD7-3469

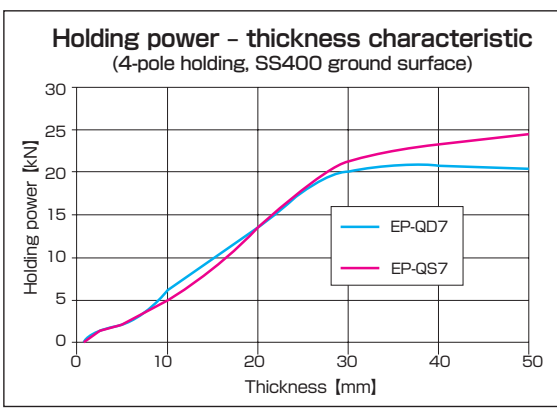
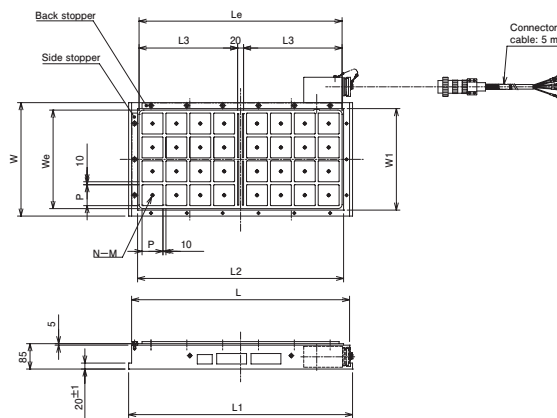
(Mounting size equivalent to 400 × 800)

[Application]

Used for securing workpieces during cutting by milling machines, machining centers, etc.

[Features]

- An optimum combination of KANETEC's original magnetic pole construction and a construction dedicated to demagnetization has reduced residual holding power significantly.
- Hardened steel and special steel workpieces having large residual magnetism can be released easily. (Compared with conventional EP-Q)
- The optional straightening block (KT-Q70/Q70M) can be used. By mounting various blocks using tapped holes on the attractive face, various securing methods can be utilized according to machining operations.
- Can be used in wet operations.
- Special types having four poles minimum are available.



Model	Mounting Size	Work Face				Pole Dimensions						Mounting Face	Height	Tapped Hole on Attractive Face		Mass	Electro Chuck Master
		W	W <sub>1</sub>	L	L <sub>2</sub>	W <sub>e</sub>	L <sub>e</sub>	No. of Poles	P	L <sub>3</sub>	L <sub>1</sub>			N	M		
EP-QD7-2669	300 (11.8) × 800 (31.5)	300 (11.8)	260 (10.2)	730 (28.7)	690 (27.1)	250 (9.84)	680 (26.7)	24	70 (2.75)	330 (12.9)	750 (29.5)	85 (3.34)	24	10 (0.39)	125kg/275 lb	EPS-D2100A	
EP-QD7-3453	400 (15.7) × 600 (23.6)	380 (14.9)	340 (13.3)	570 (22.4)	530 (20.8)	330 (12.9)	520 (20.4)			250 (9.84)	590 (23.2)						
EP-QD7-3469	400 (15.7) × 800 (31.5)	540 (21.2)	500 (19.6)	730 (28.7)	690 (27.1)	490 (19.2)	680 (26.7)	48	330 (12.9)	750 (29.5)	48	32	48	160kg/352 lb	EPS-D2100A-2		
EP-QD7-5069	550 (21.6) × 800 (31.5)			230kg/507 lb													

※The chuck controller and clamp parts are not included. ※The KANETEC chucks work best when a KANETEC chuck controller is used.  
 ※Turning the permanent electromagnetic chucks on and off must be limited to once per several minutes. If on/off operations are repeated frequently, the chucks may be damaged by overheat.

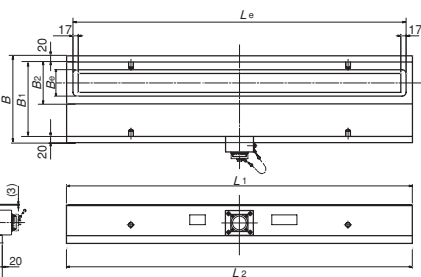
**Model EP-QL** SUPER POWERFUL PERMANENT ELECTROMAGNETIC CHUCK FOR LONG WORKPIECE

**A permanent electromagnetic chuck specialized in securing long workpieces! Powerfully holds workpieces without jigs!**

- Environmentally friendly
- Chuck controller required additionally



EP-QL-24111A



[Application]

Used to secure workpieces quickly and firmly during milling and machining of long workpieces such as railroad rails.

[Features]

- The employment of magnetic pole arrangement providing a wide attractive area enables it to attract and hold workpieces on the whole attractive face.
- A magnet for side-face attraction may be mounted to support securing of workpieces from sides.
- In place of a side-face attraction magnet, clamp parts may be used.

Model	Work Face				Mounting Face			Height	Mass	Electro Chuck Master
	B <sub>1</sub>	B <sub>2</sub>	B <sub>e</sub>	L <sub>1</sub>	L <sub>e</sub>	B	L <sub>2</sub>			
EP-QL-24111A	240 (9.44)	135 (5.31)	85 (3.34)	1115 (43.8)	1074 (42.2)	280 (11.0)	1115 (43.8)	125 (4.92)	270kg/595 lb	EPS-P2100B

※The chuck controller and clamp parts are not included. ※The KANETEC chucks work best when a KANETEC chuck controller is used.  
 ※Turning the permanent electromagnetic chucks on and off must be limited to once per several minutes. If on/off operations are repeated frequently, the chucks may be damaged by overheat.

ELECTROMAGNETIC CHUCKS  
 CHUCK CONTROLLERS  
 PERMANENT MAGNETIC CHUCKS  
 PERMANENT ELECTROMAGNETIC CHUCKS  
 BLOCKS FOR MC  
 VACUUM CHUCKS  
 PROMELTA\* SYSTEM  
 SINE BAR CHUCKS  
 BLOCKS HOLDERS, MINI CHUCKS  
 HOLDING TOOLS  
 MEASURING TOOL HOLDERS  
 MAGNETIC HOLDERS  
 MAGNETIC TOOLS