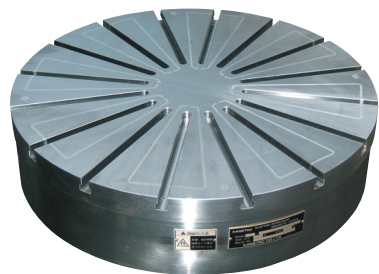


Model EPC-AST ROUND PERMANENT ELECTROMAGNETIC CHUCK

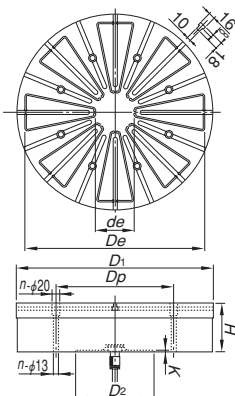
Revolutionary permanent electromagnetic chuck!
Magnetic force adjustable!

Patented



EPC-50AS-S
<An example of special fabrication>

Chuck controller required additionally



[Application]

Suitable for machining of ring-shaped workpieces such as bearings while rotating them on lathes, turning machines, cylindrical grinders and rotary grinders.

[Features]

- When used in combination with a dedicated controller equipped with a magnetic force adjust function, the magnetic force can be adjusted between strong and weak.
- Since internal heat generation and thermal distortion are minimal, highly precise machining is possible.
- Can be used in wet operations.
- These chucks are provided with T-grooves to make them suitable for various workpieces.

A size ϕ 1200 and larger is also available.

Model	Nominal Size	Work Face			No. of Poles	Mounting Face				Height	Voltage	Current	Mass	Electro Chuck Master
		D_1	D_e	d_e		D_2	K	n	D_p					
EPC- 50AST	500 (19.6)	500 (19.6)	460 (18.1)	100 (3.93)	8	200 (7.87)		8	300 (11.8)	125 (4.92)	180 VDC	27A	Approx. 140kg/ 308 lb	EPS-RW230A
EPC- 70AST	700 (27.5)	700 (27.5)	656 (25.8)	120 (4.72)		400 (15.7)	5 (0.19)		500 (19.6)	130 (5.11)		32A	Approx. 330kg/ 727 lb	EPS-RW250A
EPC- 90AST	900 (35.4)	900 (35.4)	850 (33.4)	200 (7.87)	12	500 (19.6)		12	700 (27.5)	140 (5.51)		45A	Approx. 600kg/ 1323 lb	EPS-RW275A
EPC-120AST	1200 (47.2)	1200 (47.2)	1150 (45.2)	300 (11.8)	18	650 (25.5)	6 (0.23)	18	1000 (39.4)	150 (5.90)	60A	Approx. 1100kg/ 2425 lb		

※The chuck controller is not included.
 ※The slip ring (carbon brush included) is optional. The brush holder support bar for the slip ring should be provided by the user.
 ※Turning the permanent electromagnetic chucks on and off must be limited to once per several minutes. If on/off operations are repeated frequently, the chucks may be damaged by overheat.

※Dedicated operation box (Size 140×70×155, cord 5 m) included.

Model	Power Source	Output		Dimensions			Mass
		Voltage	Current	Width	Height	Depth	
EPS-RW230A	Single-phase 200 VAC (50/60Hz)	180 VDC	30A	400 (15.7)	480 (18.8)	190 (7.48)	Approx. 15kg/33.0 lb
EPS-RW250A		180 VDC	50A		725 (28.5)	250 (9.84)	Approx. 35kg/77.1 lb
EPS-RW275A		180 VDC	75A				



Model EPC-ARF ROUND PERMANENT ELECTROMAGNETIC CHUCK

Highly precise rotary grinding operations realized!



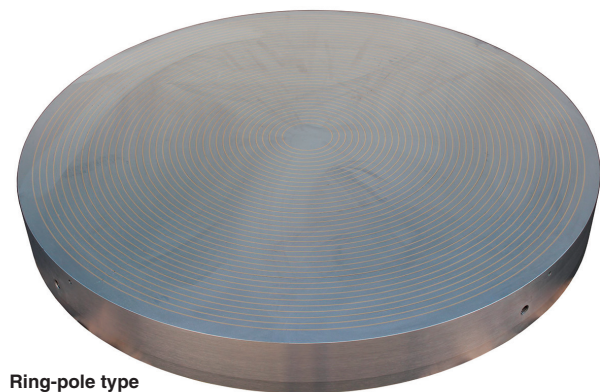
Chuck controller required additionally

[Application]

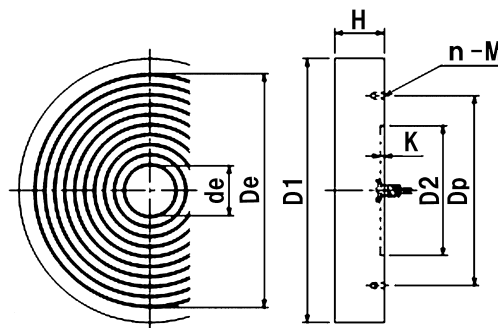
Most suitable for grinding operations by rotary grinders.

[Features]

- Since electricity needs not be supplied continuously (momentarily supplied only when mounting and demounting workpieces), heat generation and thermal deformation are minimal, thus highly precise machining operations are possible. Also, the running cost is very low and electricity can be saved.
- The holding power is maintained by the permanent magnet in the case of such troubles as power failure and cable breakage to enhance safe operations.
- In addition to four standard sizes, sizes of ϕ 500 mm minimum and up to ϕ 1500 mm are available.
- Can be used in wet operations.
- A resin-bonded structural face plate having little environmental burden is employed.



Ring-pole type
EPZ-120ARF



Model	Nominal Size	Work Face			Pole Pitch	Mounting Face				Height	Voltage	Mass	Electro Chuck Master
		D_1	D_e	d_e		D_2	K	n	M				
EPC- 63ARF	630 (24.8)	630 (24.8)	580 (22.8)	100 (3.93)	14 (2+12) 0.55 (0.07+0.47)	300 (11.8)		5		500 (19.6)	180 VDC	250kg/ 551 lb	EPS-GWB230A
EPC- 80ARF	800 (31.4)	800 (31.4)	748 (29.4)			400 (15.7)	4 (0.15)	6	M12 (0.47)	650 (25.5)		410kg/ 904 lb	
EPC-103ARF	1030 (40.5)	1030 (40.5)	976 (38.4)	104 (4.09)		550 (21.6)		8		850 (33.4)		680kg/ 1499 lb	
EPC-120ARF	1200 (47.2)	1200 (47.2)	1144 (45.0)			600 (23.6)				1000 (39.3)		930kg/ 2050 lb	

※The chuck controller is not included. ※The slip ring(SR-1) and carbon brush(BH-1A-8A) are optional.

ELECTROMAGNETIC CHUCKS
 CHUCK CONTROLLERS
 PERMANENT MAGNETIC CHUCKS
 ELECTROMAGNETIC CHUCKS
 BLOCKS FOR MC
 VACUUM CHUCKS
 PROMELTA* SYSTEM
 SINE BAR CHUCKS
 BLOCKS HOLDERS, MINI CHUCKS
 HOLDING TOOLS
 MEASURING TOOL HOLDERS
 MAGNETIC HOLDERS
 MAGNETIC TOOLS