

MAGNETIC SEPARATORS

Model HEM-C ROUND ELECTROMAGNET FOR IRON REMOVAL

Air-cooled



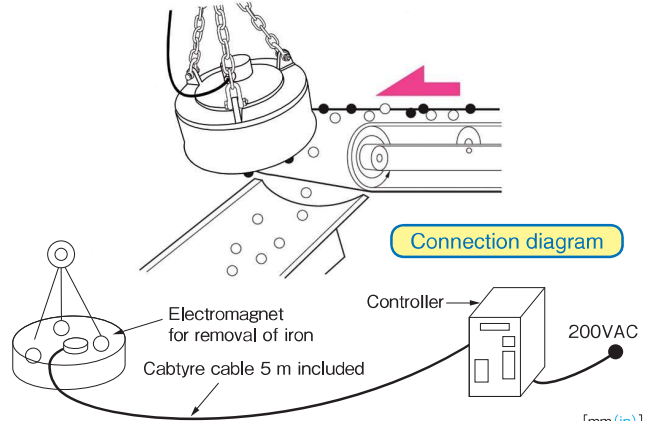
HEM-75CN

[Application]

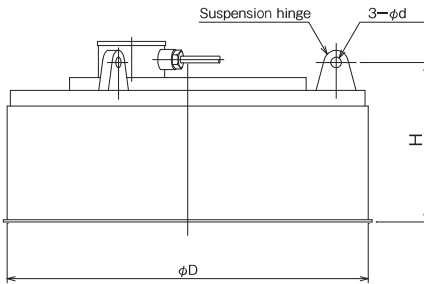
The standard suspended electromagnet designed for removing iron from substances on conveyors. This model is suitable for removing iron from ores and various materials (glass, ceramics, sugar, paper, chemicals, etc.) as well as from crushed stone in crushing plants and from casting sand in casting plants.

[Features]

- Light weight and compact for easy handling.
- Minimum maintenance and weather resistant.



[mm (in)]

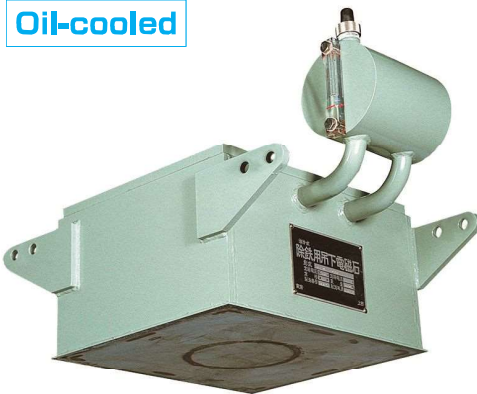


Model	Conveyor Belt Width	Conveyor Installation Length	Dimensions			Power Consumption	Mass	Applicable Rectifier
			ϕD	H	d			
HEM-40C	350 (13.7)	120 (4.72)–150 (5.90)	400 (15.7)	240 (9.44)	16 (0.62)	0.51kW	170kg/ 375 lb	KR-A208
HEM-50C	400 (15.7)	130 (5.11)–180 (7.08)	500 (19.6)	300 (11.8)	22 (0.86)	0.82kW	310kg/ 683 lb	
HEM-65CN	500 (19.6)	150 (5.90)–200 (7.87)	650 (25.5)	320 (12.5)	26 (1.02)	1.5/1.8kW	340kg/ 749 lb	HEMR-65CNI
HEM-75CN	600 (23.6)	150 (5.90)–250 (9.84)	750 (29.5)	330 (12.9)	26 (1.02)	2.0/2.4kW	500kg/ 1102 lb	HEMR-75CNI
HEM-90CN	750 (29.5)	200 (7.87)–300 (11.8)	900 (35.4)	400 (15.7)	32 (1.25)	2.6/3.1kW	900kg/ 1984 lb	HEMR-90CNI
HEM-110CN	900 (35.4)	250 (9.84)–350 (13.7)	1100 (43.3)	465 (18.3)	36 (1.41)	3.9/4.7kW	1560kg/ 3439 lb	HEMR-110CNI
HEM-130CN	1050 (41.3)	300 (11.8)–450 (17.7)	1300 (51.1)	535 (21.0)	42 (1.65)	5.8/7.1kW	2370kg/ 5225 lb	HEMR-130CNI
HEM-150CN	1200 (47.2)	400 (15.7)–550 (21.6)	1500 (59.0)	585 (23.0)	42 (1.65)	7.3/8.8kW	3630kg/ 8004 lb	HEMR-150CNI

*The power consumption is based on 200 VAC, 50/60 Hz. (HEM-40C/50C consume the same amount of electricity on both 50 Hz and 60 Hz.)
 *The belt conveyor width for each model is for reference only. As the model to be selected can be different depending on the flow width and volume of objects to process, please consult with us. *Suspension chains and suspension bolts are not included.

Model HEM-BS SUSPENDED ELECTROMAGNET FOR IRON REMOVAL

Oil-cooled



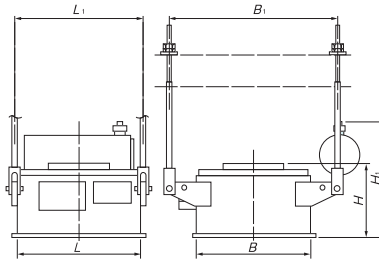
HEM-BS65

[Application]

This model utilizes the electromagnet design taken from the suspended electromagnetic separator and is recommended for use where there is a relatively small amount of mixed iron pieces on conveyors. This model is for use on large conveyors as with Model BST, but is most suitable for operations where the amount of mixed iron pieces is small and attracted iron pieces can be removed periodically.

[Features]

- There are no moving parts and the construction is simple for trouble-free operation.
- The oil-cooled system can keep temperature rise and heating below a certain level when in continuous operation. (For cooling oil used, see page 134.)
- The separating capacity is about the same as Model BST.
- The magnetic separation efficiency is high because an effective magnetic field is produced all over the attractive face.
- The applicable belt width has been widened.



Model	Conveyor Belt Width	Conveyor Installation Length	Dimensions					Power Consumption	Mass	Applicable Rectifier	
			L	B	H	L ₁	B ₁				H ₁
HEM-BS65	450 (17.7)	150 (5.90)–200 (7.87)	650 (25.5)	650 (25.5)	347 (13.6)	755 (29.7)	1025 (40.3)	605 (23.8)	1.5KW	590kg/ 1300lb	HEMR-BS 65-I
HEM-BS80	600 (23.6)	150 (5.90)–250 (9.84)	800 (31.5)	800 (31.5)	328 (12.9)	905 (35.6)	1175 (46.2)	570 (22.4)	2.4KW	870kg/ 1918lb	HEMR-BS 80-I
HEM-BS90	750 (29.5)	200 (7.87)–300 (11.8)	900 (35.4)	900 (35.4)	349 (13.7)	1005 (39.5)	1360 (53.5)	600 (23.6)	3.1KW	1200kg/ 2649lb	HEMR-BS 90-I
HEM-BS100	900 (35.4)	250 (9.84)–350 (13.7)	1000 (39.4)	1000 (39.4)	485 (19.0)	1115 (43.8)	1583 (62.3)	790 (31.1)	4.0KW	1820kg/ 4013lb	HEMR-BS100-I
HEM-BS115	1050 (41.3)	300 (11.8)–350 (13.7)	1150 (45.2)	1150 (45.2)	496 (19.5)	1265 (49.8)	1733 (68.2)	785 (30.9)	5.2KW	2800kg/ 6174lb	HEMR-BS115-I
HEM-BS130	1200 (47.2)	300 (11.8)–400 (15.7)	1300 (51.1)	1300 (51.1)	593 (23.3)	1431 (56.3)	1926 (75.8)	890 (35.0)	6.6KW	4100kg/ 9040lb	HEMR-BS130-I
HEM-BS150	1400 (55.1)	300 (11.8)–450 (17.7)	1500 (59.0)	1500 (59.0)	498 (19.6)	1643 (64.6)	2126 (83.7)	775 (30.5)	8.7KW	4900kg/ 10804lb	HEMR-BS150-I
HEM-BS170	1600 (62.9)	400 (15.7)–550 (21.6)	1700 (66.9)	1700 (66.9)	575 (22.6)	1843 (72.5)	2326 (91.5)	840 (33.0)	10.4KW	6500kg/ 14332lb	HEMR-BS170-I

[mm (in)]

*The power consumption is based on 200 VAC (50 Hz). *Suspension bolts are included as standard accessories.
 *The belt conveyor width for each model is for reference only. As the model to be selected can be different depending on the flow width and volume of objects to process, please consult with us.

MAGNETIC TOOLS & EQUIPMENT FOR CONVEYOR OPERATION
 LIFTING MAGNET
 MAGBONE*
 CHIP & SLUDGE CONVEYANCE EQUIPMENT
 ENVIRONMENTAL CONVEYANCE EQUIPMENT
 MAGNETIZER AND DEMAGNETIZER FOR CONVEYANCE
 MAGNETIC SEPARATORS
 POWERFUL MAGNETIC SEPARATORS
 MEASURING TOOLS
 MEASURING INSTRUMENTS
 MAGNETIC MATERIALS