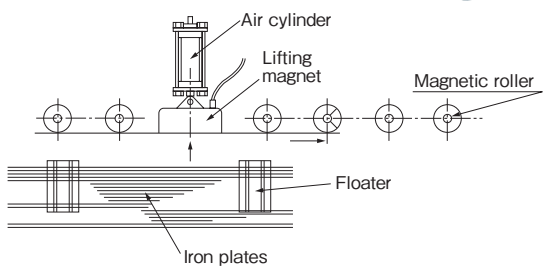
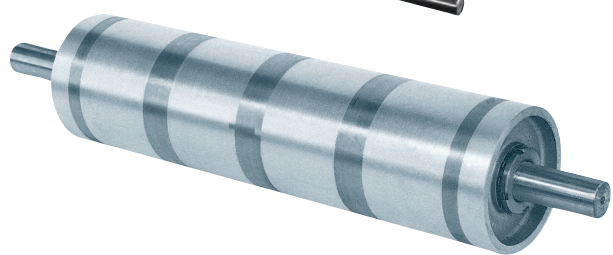
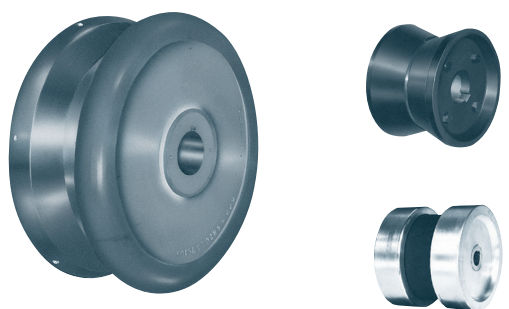
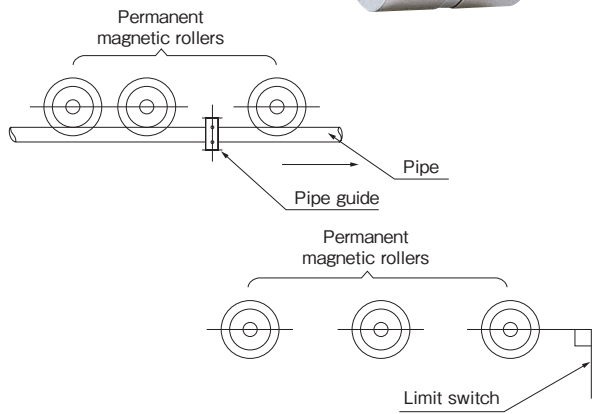
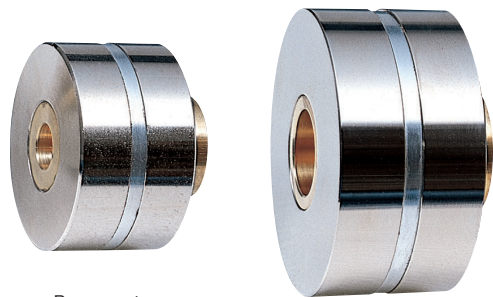


MAGNETIC EQUIPMENT FOR CONVEYANCE

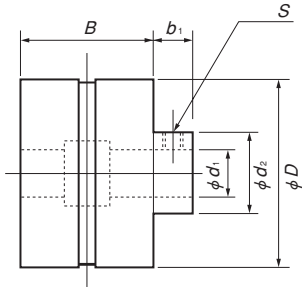
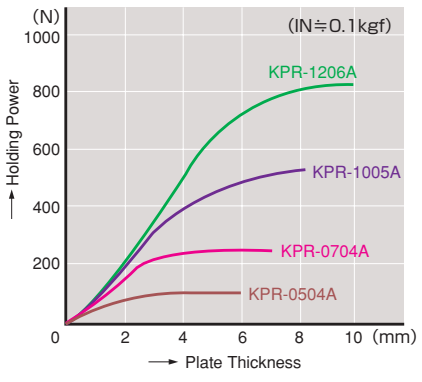
MAGNETIC TOOLS & EQUIPMENT FOR MINING OPERATION
 LIFTING MAGNET
 MAGBOPRE*
 OHP & SLOUSE CONVEYANCE EQUIPMENT
 ENVIRONMENTAL EQUIPMENT
 MAGNETIZER AND DEMAGNETIZER
 MAGNETIC EQUIPMENT FOR CONVEYANCE
 MAGNETIC SEPARATORS
 POWERFUL MAGNETIC SEPARATORS
 MEASURING TOOLS
 MEASURING INSTRUMENTS
 MAGNETIC MATERIALS



Model KPR-A SMALL PERMANENT MAGNETIC ROLLER

The magnetic rollers that are frequently used for conveyance (including conveyance stopping) of steel pipes and steel plates have been standardized and kept in stock.

⚠ Precaution for use
 These products are assembled by bonding. For high temperature services and rubber lining, structural restrictions must be taken into consideration. Please contact us for more information.



Model	Dimensions						Mass
	D	B	d ₁	b ₁	S	d ₂	
KPR-0504A	50 (1.96)	35 (1.37)	12 (0.47)	10 (0.39)	M5 (0.19)	22 (0.86)	0.45kg/0.99 lb
KPR-0704A	70 (2.75)	40 (1.57)	20 (0.78)	12 (0.47)	M6 (0.23)	35 (1.37)	1.0 kg/2.20 lb
KPR-1005A	100 (3.93)	50 (1.96)	30 (1.18)			45 (1.77)	2.4 kg/5.29 lb
KPR-1206A	120 (4.72)	60 (2.36)	40 (1.57)	16 (0.62)	M8 (0.31)	60 (2.36)	3.8 kg/8.39 lb

Model KER ELECTROMAGNETIC ROLLER

[Application]
 This model employs a powerful electromagnet and its optimum design helps increase the efficiency of conveyance of steel pipes and steel plates.

[Features]
 ● The electromagnetic rollers can easily be turned on and off or adjusted in magnetic force for easy handling of iron products.

<Specification>
 ● For the standard type dimensions, refer to the electromagnetic pulley KER.

Model KPR PERMANENT MAGNETIC ROLLER FOR THIN STEEL SHEET

[Application]
 Most suitable for holding thin steel sheets of 0.2 to 0.4 mm thick such as printing rollers.

<Manufacturing range>
 Diameter: φ100-200mm
 Length: 300-1000mm
 For a length longer than 800 mm, the diameter needs to be φ180 mm or larger.

<Revolution>
 750 rpm max.

Remarks) In case balance adjustment is required, please contact us.

※ Please see the Facsimile Communication Form (Selection Data) on page 175 also.