

**Model KETN POWERFUL WAVEFORM ELECTROMAGNETIC CHUCK**

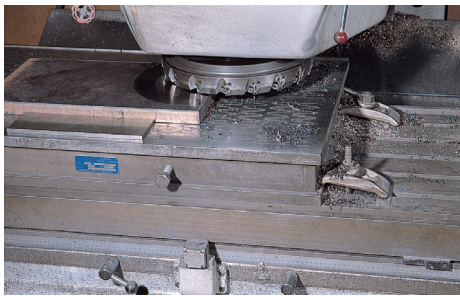
Environmentally friendly



KETN-4080A

Chuck controller required additionally

An example of mounting on machine

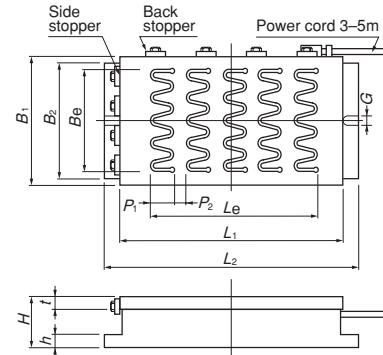


[Application]

A chuck for cutting by a milling machine, planomiller, etc. The wavy pattern of the separator helps distribute the magnetic force uniformly over the whole attractive surface and increases the overall magnetic force. Thus, this is a general-purpose chuck for a wide range of cutting applications.

[Features]

- Electromagnetic chucks generating strong holding power specially for cutting operations.
- Specially designed to minimize influence of magnetism on cutters.
- For heavy duty cutting, Model KETZ, super powerful electromagnetic chuck, is available, but this model has a wider application range that includes workpieces thinner than 15 mm, for which Model KETZ is not suitable.



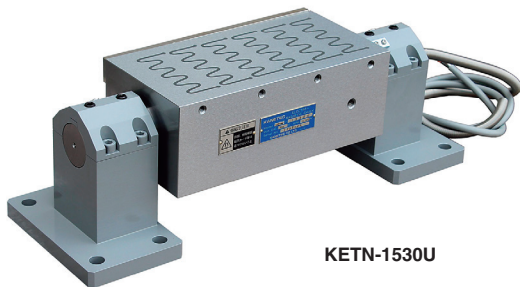
Model	Nominal Size	Work Face					Pole Pitch		Mounting Face		Height	Mounting Hole	Voltage	Current	Mass	Electro Chuck Master	Remarks		
		B <sub>1</sub>	L <sub>1</sub>	t	B <sub>e</sub>	L <sub>e</sub>	P <sub>1</sub>	P <sub>2</sub>	B <sub>2</sub>	L <sub>2</sub>								h	G
KETN- 1530A	150(5.90) × 300(11.8)	150(5.90)	300(11.8)	20	112(4.40)	248(9.76)	28 (1.10)	146(5.74)	344(13.5)	18	100	90 VDC	0.49A	27kg/ 59lb	*ES-M103B ES-M305B EH-V305A EH-VE305A	*For types with a combination of a rectifier and demagnetizer, see pages of "Chuck Controllers."			
KETN- 1545A	150(5.90) × 450(17.7)	150(5.90)	450(17.7)	(0.78)	112(4.40)	404(15.9)	26 (1.02)	146(5.74)	494(19.4)	(0.70)	(3.93)		14	0.87A			41kg/ 90lb		
KETN- 2050A	200(7.87) × 500(19.6)	200(7.87)	500(19.6)	25	152(5.98)	440(17.3)	22 (0.86)	196(7.71)	544(21.4)	20	120		Clamping	1.09A			80kg/ 176lb		
KETN- 2060A	200(7.87) × 600(23.6)		600(23.6)		523(20.5)	22.5(0.88)	600(23.6)	544(21.4)	600(23.6)				1.18A	98kg/ 216lb					
KETN- 2550A	250(9.84) × 500(19.6)	250(9.84)	500(19.6)	25	208(8.18)	440(17.3)	22 (0.86)	246(9.68)	544(21.4)	20	120		14	1.42A			102kg/ 224lb		
KETN- 3060A	300(11.8) × 600(23.6)	600(23.6)	523(20.5)		22.5(0.88)	600(23.6)	544(21.4)	600(23.6)	1.59A				130kg/ 286lb						
KETN- 3080A	300(11.8) × 800(31.5)	300(11.8)	800(31.5)	25	246(9.68)	722(28.4)	26 (1.02)	294(11.5)	800(31.5)	20	120		Clamping	2.21A			173kg/ 381lb		
KETN-30100A	300(11.8) × 1000(39.4)	1000(39.4)	(0.98)		919(36.1)	26.5(1.04)	1000(39.4)	1000(39.4)	3.35A					240kg/ 529lb					
KETN- 4080A	400(15.7) × 800(31.5)	400(15.7)	800(31.5)	25	342(13.4)	722(28.4)	25 (0.98)	390(15.3)	800(31.5)	20	120			Clamping			3.05A	230kg/ 507lb	
KETN-40100A	400(15.7) × 1000(39.4)	1000(39.4)	(0.98)		919(36.1)	26.5(1.04)	1000(39.4)	1000(39.4)	4.17A								288kg/ 634lb		
KETN-50100A	500(19.6) × 1000(39.4)	500(19.6)	1000(39.4)	25	432(17.0)	920(36.2)	23 (0.90)	490(19.2)	1000(39.4)	20	120						Clamping	5.86A	400kg/ 881lb
KETN-60100A	600(23.6) × 1000(39.4)	600(23.6)	1000(39.4)		522(20.5)	924(36.3)	31 (1.22)	590(23.2)	5.66A									470kg/1036lb	

\*The power cord is 3 m for KETN-1530A and 1545A and 5 m for other models. \*\*If the magnetic force needs not be adjusted, use ES-M.  
\*The chuck controller and clamp parts are not included. The KANETEC chucks work best when a KANETEC chuck controller is used.

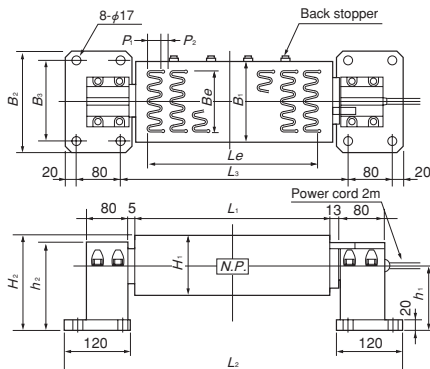
**Model KETN-U POWERFUL TILT TYPE ELECTROMAGNETIC CHUCK**

Chuck controller required additionally

Environmentally friendly



KETN-1530U



[Application]

Suitable for heavy duty grinding and light duty cutting of inclined surfaces of jigs/ fixtures and metal molds.

[Features]

- Strong holding power.
- Easy mounting and an angle can be set as desired in a range of 90° forward and 90° backward.
- The rotary shaft with scale facilitates angle setting.

Model	Nominal Size	Work Face					Pole Pitch		Tilt Base				Length	Height	Voltage	Current	Mass	Electro Chuck Master	Remarks
		B <sub>1</sub>	L <sub>1</sub>	B <sub>e</sub>	L <sub>e</sub>	H <sub>1</sub>	P <sub>1</sub>	P <sub>2</sub>	B <sub>2</sub>	B <sub>3</sub>	L <sub>3</sub>	h <sub>1</sub>							
KETN-1530U	150(5.90) × 300(11.8)	150	300(11.8)	116	248(9.76)	28	(1.10)	16	190	150	352(13.8)	120	163	552(21.7)	90 VDC	0.49A	56kg/ 123 lb	*ES-M103B ES-M305B EH-V305A EH-VE305A	*For types with a combination of a rectifier and demagnetizer, see pages of "Chuck Controllers."
KETN-1545U	150(5.90) × 450(17.7)	(5.90)	450(17.7)	(4.56)	404(15.9)	26	(1.02)	(0.62)	(7.48)	(5.90)	502(19.7)	120	163	702(27.6)		0.83A	72kg/ 158 lb		
KETN-2050U	200(7.87) × 500(19.6)	200	500(19.6)	152	440(17.3)	22	(0.86)	22	(0.86)	(0.62)	552(21.7)	(4.72)	(6.41)	752(29.6)		1.26A	96kg/ 211 lb		
KETN-2060U	200(7.87) × 600(23.6)	(7.87)	600(23.6)	(5.98)	530(20.8)	22	(0.86)	22	(0.86)	(0.62)	652(25.6)	(4.72)	(6.41)	852(33.5)		1.17A	110kg/ 242 lb		

\*If the magnetic force needs not be adjusted, use ES-M.  
\*The chuck controller and clamp parts are not included. The KANETEC chucks work best when a KANETEC chuck controller is used.  
\*The scaled ring can be used to set an angle roughly. When it is necessary to set the angle accurately, use a sine bar or other suitable device.

ELECTROMAGNETIC CHUCKS  
CHUCK CONTROLLERS  
PERMANENT ELECTROMAGNETIC CHUCKS  
MAGNETIC CHUCKS  
BLOCKS FOR MC  
VACUUM CHUCKS  
PROMELTA\* SYSTEM  
SINE BAR CHUCKS  
BLOCKS HOLDERS, MINI CHUCKS  
HOLDING TOOLS  
MEASURING TOOL HOLDERS  
MAGNETIC TOOLS