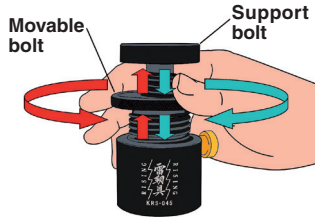


Model KRS HANDY SUPPORT JACK "RISING"

Patented



KRS-045

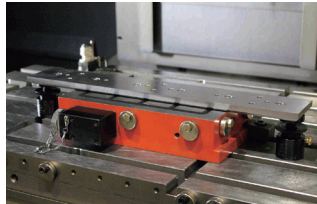


[Application]

Suitable for supporting the overhanging portion of workpieces during machining and measurement.

[Features]

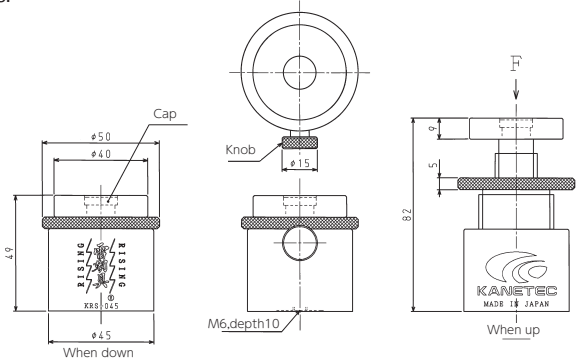
- The support bolt moves up and down as the movable bolt is turned. This design enables expansion/contraction or up/down movement quickly by one hand.
- Since the support bolt does not rotate, it does not damage workpieces when it contacts them.
- The movable/support bolts can be locked simultaneously by tightening the knob to enhance the work efficiency.
- ※ If the knob is likely to be loosened by vibrations, use the included grub screw.
- The use of top and bottom two types of attachments (optional) expands the applications.



Supporting the overhanging portion of workpiece



Supporting the hollow portion during grinding



Main unit

Model	Main Unit	Height	Allowable Load in F Direction	Mass
KRS-045	φ45 (1.77)	49-82 (1.92-3.22)	9.81kN	0.48kg/1.05 lb

※ A grub screw is included.

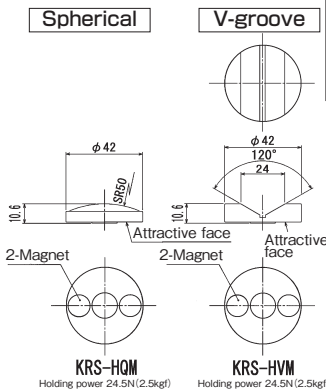
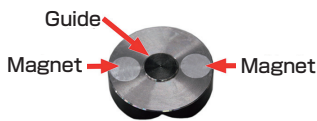
<Top workpiece supporter (Optional)>



KRS-HQM



KRS-HVM



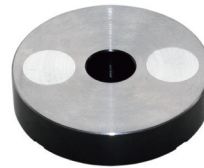
Measuring round bar by use of V-groove attachment

Top workpiece supporter (Optional)

[mm (in.)]

Model	Shape	Dimensions	Mass
KRS-HQM	Sphere(SR50)	φ42 (1.65) × 10.6 (0.41)	0.13kg/0.28 lb
KRS-HVM	V-groove(120°)		

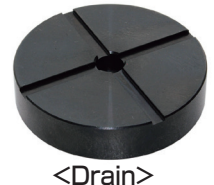
<Magnets for bottom part mounting (Optional)>



KRS-M2



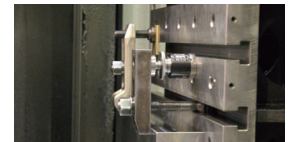
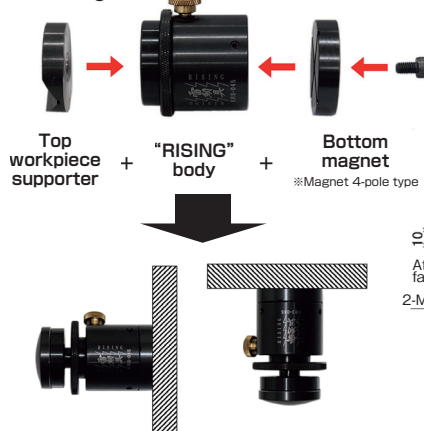
KRS-M4



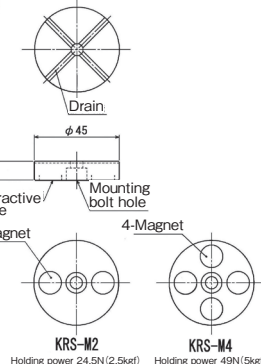
<Drain>

A drain is provided on the mating surface with the body of the bottom part mounting magnet to discharge machining liquid that has entered the inside.

- When secured by using the magnet 2-pole type, slippage of the body when operated by one hand can be prevented.
- The use of the magnet 4-pole type together enables mounting on the vertical face of horizontal machining centers, etc. or reverse mounting.



An example of use on horizontal machining center



Magnets for bottom part mounting (Optional)

[mm (in.)]

Model	No. of Poles	Holding Power	Dimensions	Mass
KRS-M2	2	24.5N (2.5kgf)	φ45 (1.77) × 10 (0.39)	0.13kg/0.28 lb
KRS-M4	4	49N (5kgf)		

※ One hex. socket head bolt (M6 × 10) is included.

ELECTROMAGNETIC CHUCKS
CHUCK CONTROLLERS
PERMANENT ELECTROMAGNETIC CHUCKS
PERMANENT ELECTROMAGNETIC CHUCKS
BLOCKS FOR MC
VACUUM CHUCKS
PROMELTA* SYSTEM
SINE BAR CHUCKS
BLOCKS HOLDERS, MINI CHUCKS
HOLDING TOOLS
MEASURING TOOL HOLDERS
MAGNETIC HOLDERS
MAGNETIC TOOLS