

Model **LPR-VN-WP** DRIP-PROOF SMALL PERMANENT MAGNETIC LIFMA*

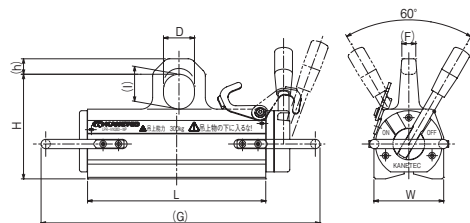
Drip-proof specification



LPR-VN600-WP

[Application]

Unlike the standard type (indoor use), these Lifmas are of drip-proof construction and can be used for outdoor work.



⚠ When operating the handle of LPR-VN75-WP and LPR-VN150-WP, be sure that the safety stopper will not interfere with the lifting fixture.

⚠ Precautions for use

When you plan to use the Lifma for special steel materials such as hardened materials, please consult with us prior to purchasing the Lifma. These Lifmas are not of waterproof construction. Do not use them in water or places where they are subjected to water pressure nor leave them outdoor.

Model	Lifting Capacity		Dimensions							Mass	
	Steel Plate	Steel bar	W	L	G	h	H	D	F		I
LPR-VN 75-WP	75kg/ 165 lb	50kg/ 110 lb		80 (3.14)	160 (6.29)	15 (0.59)	135 (5.31)	40 (1.57)	15 (0.59)	45 (1.77)	5.5kg/12.1 lb
LPR-VN150-WP	150kg/ 330 lb	100kg/ 220 lb	90 (3.54)	130 (5.11)	260 (10.2)	20 (0.78)					8kg/17.6 lb
LPR-VN300-WP	300kg/ 661 lb	200kg/ 440 lb		230 (9.05)	360 (14.1)	20 (0.78)			18 (0.70)		14kg/30.8 lb
LPR-VN600-WP	600kg/ 1322 lb	400kg/ 881 lb	119 (4.68)	330 (12.9)	500 (19.6)	25 (0.98)	184 (7.24)	60 (2.36)	25 (0.98)	65 (2.55)	35kg/77.1 lb

※The lifting capacity is indicated by a value that is a third (safety factor 3) of the max. holding power.
※LPR-VN75-WP is not provided with a rear guard. ※For the lifting standard, see Model LPR-VN.

Model **LPH-WP** DRIP-PROOF LARGE PERMANENT MAGNETIC LIFMA*

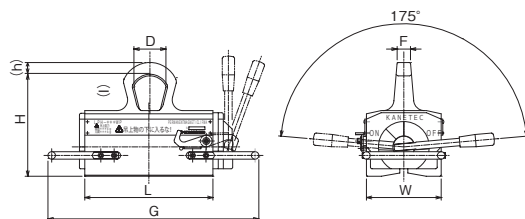
Drip-proof specification



LPH-1500WP

[Application]

Unlike the standard type (indoor use), these Lifmas are of drip-proof construction and can be used for outdoor work.



⚠ Precautions for use

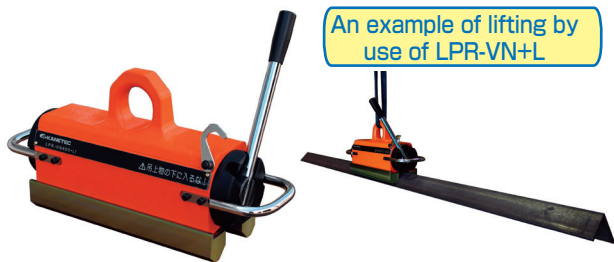
When you plan to use the Lifma for special steel materials such as hardened materials, please consult with us prior to purchasing the Lifma. These Lifmas are not of waterproof construction. Do not use them in water or places where they are subjected to water pressure nor leave them outdoor.

Model	Lifting Capacity		Dimensions							Mass	
	Steel Plate	Steel bar	W	L	G	h	H	D	F		I
LPH-1000WP	1000kg/ 2204 lb	600kg/ 1322 lb	180 (7.08)	320 (12.5)	505 (19.8)	30 (1.18)	253 (9.96)	65 (2.55)	75 (2.95)	30 (1.18)	80kg/176 lb
LPH-1500WP	1500kg/ 3306 lb	800kg/ 1763 lb		400 (15.7)	585 (23.0)	35 (1.37)	268 (10.5)	75 (2.95)	85 (3.34)		100kg/220 lb
LPH-2000WP	2000kg/ 4409 lb	900kg/ 1984 lb	205 (8.07)	500 (19.6)	685 (26.9)	38 (1.49)	281 (11.0)	80 (3.14)	97 (3.81)	35 (1.37)	130kg/286 lb

※The lifting capacity is indicated by a value that is a third (safety factor 3) of the max. holding power.
※For the lifting standard, see Model LPH.

Model **LPR-VN+L** SECTION STEEL LIFTING PERMANENT MAGNETIC LIFMA*

An example of lifting by use of LPR-VN+L



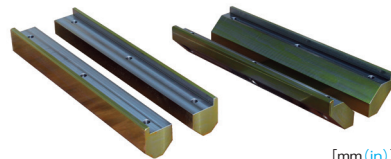
LPR-VN600+L1

[Application]

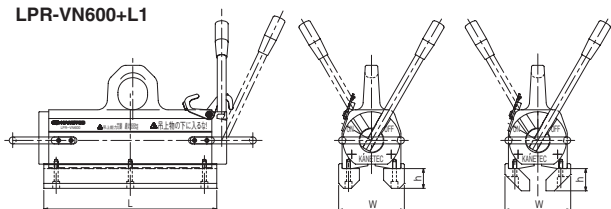
These Lifmas are the standard type permanent magnetic Lifma LPR-VN to which an adapter to lift L-shaped steel has been added and designed to facilitate transportation of L-shaped steel.

[Features]

- Without the adapter, these Lifmas can be used as the standard model LPR-VN.
- An adapter for different section steel materials can be installed by use of the adapter mounting hole.



[mm (in)]



Model	Included Adapter	Dimensions			Mass
		L	W	h	
LPR-VN300+L1	Lifting of steel in mountain style	240 (9.44)	110 (4.33)	25 (0.98)	19kg/ 41 lb
LPR-VN300+L2	Lifting of steel in valley style			35 (1.37)	
LPR-VN300+L3	Lifting of steel in mountain style Lifting of steel in valley style	350 (13.7)	133 (5.23)	25 (0.98)	24kg/ 41 lb (ea)
LPR-VN600+L1	Lifting of steel in mountain style			35 (1.37)	
LPR-VN600+L2	Lifting of steel in valley style	350 (13.7)	133 (5.23)	40 (1.57)	45kg/ 99 lb
LPR-VN600+L3	Lifting of steel in mountain style Lifting of steel in valley style			45 (1.77)	

※The adapter comes with mounting bolts and tightening tool. (*) The total mass includes two adapter types.

■ LPR-L lifting standard

Model	Applicable Workpiece Size (per unit)
LPR-VN300+L1	Lifting in mountain style L40 (1.57) – 150 (5.90) × 4m (157) max.
LPR-VN300+L2	Lifting in valley style L50 (1.96) – 200 (7.87) × 2m (78.7) max.
LPR-VN600+L1	Lifting in mountain style L75 (2.95) – 300 (11.8) × 4m (157) max.
LPR-VN600+L2	Lifting in valley style L90 (3.54) – 450 (17.7) × 2m (78.7) max.

⚠ Precautions for use

When you plan to use the Lifma for special steel materials such as hardened materials, please consult with us prior to purchasing the Lifma. If an adapter is attached, the capacity will drop because of magnetic leakage. Do not lift flat steel plates or round steel bars with an adapter attached.

⚠ Keep in mind that the capacity of the Lifma varies largely depending on the thickness and material of workpieces, clearance and other factors.

MAGNETIC EQUIPMENT FOR MEDICAL OPERATION
LIFTING MAGNET
MAGBORG
CHIP & SLUDGE CONVEYANCE EQUIPMENT
ENVIRONMENTAL EQUIPMENT
MAGNETIZER AND DEMAGNETIZER
MAGNETIC EQUIPMENT FOR CONVEYANCE
MAGNETIC SEPARATORS
POWERFUL MAGNETIC SEPARATORS
MEASURING TOOLS
MAGNETIC INSTRUMENTS
MAGNETIC MATERIALS