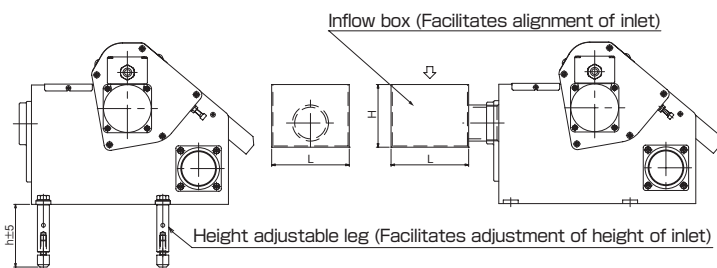


Model MS MAGCLEAN* HEIGHT ADJUSTABLE LEGS/INFLOW BOX (Optional)



[Application]

An optional unit to enable the Magclean to be mounted on a machine easily.

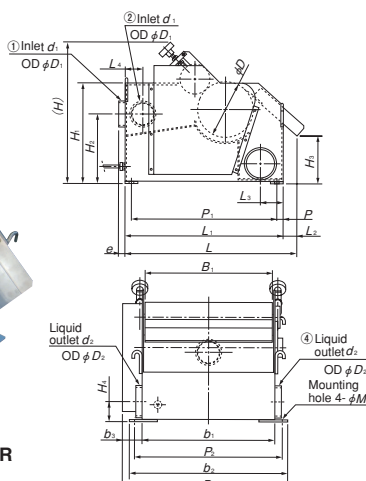
Model			Dimensions		
Standard	High mag. force	Super high mag. force	h	L	H
MS- 2FB	MS- 2FBH	MS- 2FBHP	105 (4.13)	110 (4.33)	105 (4.13)
MS- 4FB	MS- 4FBH	MS- 4FBHP		130 (5.11)	
MS- 6FB	MS- 6FBH	MS- 6FBHP		150 (5.90)	
MS- 8FB	MS- 8FBH	MS- 8FBHP	155 (6.10)	170 (6.69)	115 (4.52)
MS-12FB	MS-12FBH	MS-12FBHP		190 (7.48)	

※For MS-18FB/FBH/FBHP and MS-24FB/FBH/FBHP, please contact us.

Model MS-BS MAGCLEAN*



MS-24BS-BR



[Application]

Suitable for removal of iron powder from grinding fluid.

If you plan to use this model for washing purpose (fresh water and other liquids), please contact us.

Model designation of MS-BS

When ordering MS-BS Series, be sure to specify the direction of the inlet and liquid outlet in the model designation as follows:

MS-24BS-B L

Direction of liquid outlet

L: Left when viewed from the sludge discharge direction. (Liquid outlet ③ in the following figure)

R: Right when viewed from the sludge discharge direction. (Liquid outlet ④ in the following figure)

Direction of the inlet

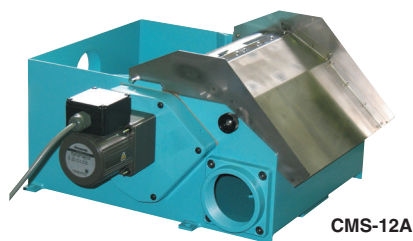
B: Backside (Inlet ① in the following figure)

R: Right when viewed from the sludge discharge direction. (Inlet ② in the following figure)

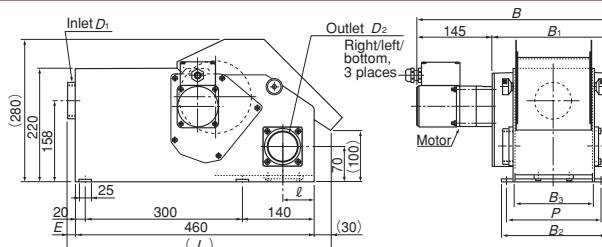
Model	Inlet Direction	Liquid Discharge Direction	Processing Capacity	Power Source	Motor	Dimensions																				Mass								
						L	B	H	L ₁	L ₂	L ₃	L ₄	e	P	P ₁	P ₂	B ₁	b ₁	b ₂	b ₃	H ₁	H ₂	H ₃	H ₄	M		D	D ₁	d ₁	D ₂	d ₂			
MS-24BS-BL	①	③	240L/min	3-phase 200 VAC, 50/60 Hz	90W	670	645	534	620		90	—	25	570	572	495	515	615	80	386	268	189	77	17	214	102	PS-3	127	PS-4	115kg/253 lb				
MS-24BS-BR	②	④				70	—	—	—	—	—	—	—	—	—	—	—	—	—	—	—	—	—	—	—	—	—	—	—	—	—	—	—	
MS-24BS-RL	①	③				839	—	—	—	—	—	—	—	—	—	—	—	—	—	—	—	—	—	—	—	—	—	—	—	—	—	—	—	
MS-24BS-RR	②	④				70	—	—	—	—	—	—	—	—	—	—	—	—	—	—	—	—	—	—	—	—	—	—	—	—	—	—	—	
MS-36BS-BL	①	③	360L/min	3-phase 200 VAC, 50/60 Hz	100W	830	839	670	780		50	105	—	35	—	—	—	—	—	—	—	—	—	—	—	—	—	—	—	—	—			
MS-36BS-BR	②	④				80	—	—	—	—	—	—	—	—	—	—	—	—	—	—	—	—	—	—	—	—	—	—	—	—	—	—	—	
MS-36BS-RL	①	③				830	—	—	—	—	—	—	—	—	—	—	—	—	—	—	—	—	—	—	—	—	—	—	—	—	—	—	—	—
MS-36BS-RR	②	④				80	—	—	—	—	—	—	—	—	—	—	—	—	—	—	—	—	—	—	—	—	—	—	—	—	—	—	—	—
MS-50BS-BL	①	③	500L/min	3-phase 200 VAC, 50/60 Hz	100W	1139	—	—	—		120	—	35	—	—	—	—	—	—	—	—	—	—	—	—	—	—	—	—	—	—			
MS-50BS-BR	②	④				90	—	—	—	—	—	—	—	—	—	—	—	—	—	—	—	—	—	—	—	—	—	—	—	—	—	—	—	
MS-50BS-RL	①	③				1030	930	968	1090	—	—	—	—	—	—	—	—	—	—	—	—	—	—	—	—	—	—	—	—	—	—	—	—	—
MS-50BS-RR	②	④				110	500	—	—	—	—	—	—	—	—	—	—	—	—	—	—	—	—	—	—	—	—	—	—	—	—	—	—	—

※The numbers in "Inlet Direction" and "Liquid outlet" correspond to No. ① to ④ in the figures above. Be sure to check the directions.

Model CMS CHIP MAGCLEAN*



CMS-12A



[Application]

This Chip Magclean is designed to remove/collect chips in coolant that is discharged from cutting operations by machine tools.

[Features]

- The employment of a magnetic drum with special magnetic pole array ensures a high rate of collection.
- The newly designed scrapper improves performance to separate and remove chips from the magnetic drum.
- The expanded discharge space helps stable discharge. The higher side wall helps prevent overflowing.
- The overall height has been reduced by 80 mm by changing the motor mounting position, enabling the Chip Magclean to be mounted in places where it could not be mounted.

Model	Processing Capacity	Power Source	Motor	Dimensions										Mass
				L	B	E	l	B ₁	B ₂	B ₃	P	D ₁	D ₂	
CMS-4A	40L/min	3-phase 200 VAC	25W	505 (19.8)	380 (14.9)	20 (0.78)	70 (2.75)	234 (9.21)	200 (7.87)	152 (5.98)	180 (7.08)	PS-2	PS-2	22kg/ 48 lb
CMS-8A	80L/min	220 VAC, 50/60 Hz		430 (16.9)	—	—	—	284 (11.1)	250 (9.84)	202 (7.95)	230 (9.05)	PS-2-1/2	PS-2-1/2	27kg/ 59 lb
CMS-12A	120L/min	50/60 Hz		515 (20.2)	580 (22.8)	25 (0.98)	60 (2.36)	434 (17.0)	400 (15.7)	352 (13.8)	380 (14.9)	PS-2-1/2	PS-3	41kg/ 90 lb