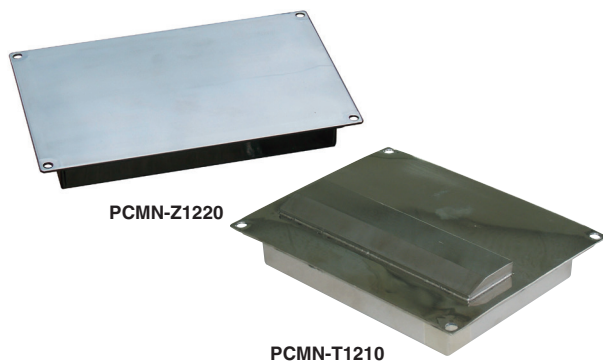


Model **PCMN** SANITARY PLATE MAGNET



[Application]

Flat type

This type is installed in critical places of nonmagnetic ducts to catch iron in flowing raw materials. When the magnet is removed after raw materials have passed, the magnetic force is canceled and only iron can be collected.

[Features]

- High grade finish of sanitary specification.
- These magnets are completely enclosed and therefore can be installed in liquid.
- Powerful as a rare earth magnet having a property value of 1.2 T is built in.
- The employment of a magnet layout having a wide attractive area produces a magnetic flux density that is 20% greater than that of the flat type. (PCMN-Z)

Type with template

This type is installed on chutes and hoppers to separate/collect iron in granular materials such as foods and chemicals. The template holds caught iron against the pressure of flowing raw materials and keeps accumulating such iron.

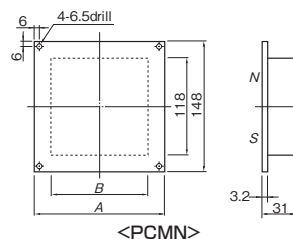
Powerful plate magnet

Flat type Type with template

[mm (in.)]

Model		Dimensions		Material		Surface Finish	Built-in Permanent Magnet	Surface Max. Magnetic Flux Density		Working Temp. Upper Limit	Mass	
Flat	Template	A	B	Main unit	Template (PCMN-T)			Flat	Template		Flat	Template
PCMN-1205	PCMN-T1205	85 (3.34)	55 (2.16)			#400 buffed	Nd rare earth type Property value 1.2 T (12,000 G)	0.4T	0.8T	80°C (176° F)	1.8kg/3.96 lb	2.0kg/4.40 lb
PCMN-1210	PCMN-T1210	135 (5.31)	105 (4.13)								3.1kg/6.83 lb	3.4kg/7.49 lb
PCMN-1215	PCMN-T1215	185 (7.28)	156 (6.14)								5.0kg/11.0 lb	5.5kg/12.1 lb
PCMN-1220	PCMN-T1220	235 (9.25)	207 (8.15)	SUS 304	SUS 430						6.0kg/13.2 lb	6.6kg/14.5 lb
PCMN-1225	PCMN-T1225	290 (11.4)	258 (10.1)								7.1kg/15.6 lb	7.9kg/17.4 lb
PCMN-1230	PCMN-T1230	340 (13.3)	309 (12.1)								8.6kg/18.9 lb	9.5kg/21.0 lb

*These magnets can be used in liquids that do not cause chemical reaction with the material of the magnets.

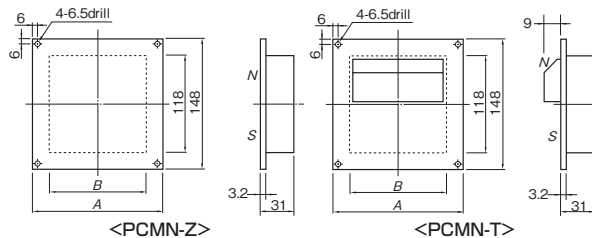


Type of magnet staggered arrangement

[mm (in.)]

Model	Dimensions		Material	Surface Finish	Built-in Permanent Magnet	Surface Max. Magnetic Flux Density	Working Temp. Upper Limit	Mass
	A	B						
PCMN-Z1212	150 (5.90)	120 (4.72)	SUS 304	#400 buffed	Nd rare earth Type Property value 1.2 T (12,000 G)	0.5T (5000G)	80°C (176° F)	3.5kg/7.71 lb
PCMN-Z1220	230 (9.05)	200 (7.87)						5.5kg/12.1 lb
PCMN-Z1225	280 (11.0)	250 (9.84)						6.5kg/14.3 lb
PCMN-Z1230	334 (13.1)	304 (11.9)						8.0kg/17.6 lb

*These magnets can be used in liquids that do not cause chemical reaction with the material of the magnets.



Model **PCMN-HU** SUSPENDED POWERFUL PLATE MAGNET

[Application]

These magnets are suspended above a conveyor to attract and remove iron pieces, etc. from foods being conveyed.

[Features]

- These magnets are a suspension version of the conventional powerful plate magnet and can easily be used in liquid.
- Four eyebolts are included

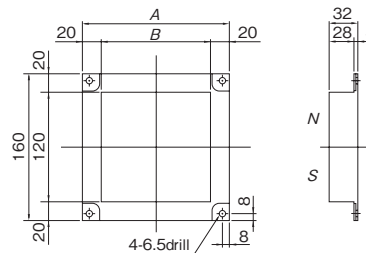
Powerful plate magnet

Suspension type

[mm (in.)]

Model	Dimensions		Material	Surface Finish	Built-in Permanent Magnet	Surface Max. Magnetic Flux Density	Working Temp. Upper Limit	Mass
	A	B						
PCMN-HU1205	97 (3.81)	57 (2.24)	SUS304	#400 buffed	Nd rare earth type Property value 1.2 T (12,000 G)	0.4T	80°C (176° F)	2.3kg/5.07 lb
PCMN-HU1210	148 (5.82)	108 (4.25)						3.8kg/8.39 lb
PCMN-HU1215	199 (7.83)	159 (6.26)						6.0kg/13.2 lb
PCMN-HU1220	249 (9.80)	209 (8.22)						7.1kg/15.6 lb
PCMN-HU1225	300 (11.8)	260 (10.2)						8.2kg/18.1 lb
PCMN-HU1230	351 (13.8)	311 (12.2)						9.9kg/21.8 lb

*These magnets can be used in liquids that do not cause chemical reaction with the material of the magnets.



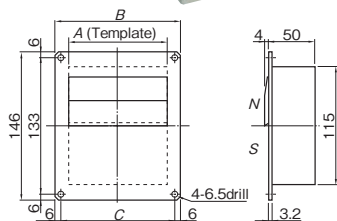
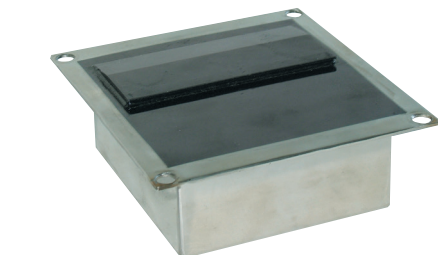
Model **PCMN-TF** PLATE MAGNET WITH WEAR-RESISTANT COATING

Miracle 1.4 Tesla (14,000 Gauss) realized

[Features]

- A uniform magnetic field is produced over the entire pole having a certain width.
- A magnetic flux density of 1.4 Tesla (14,000 Gauss) far exceeding conventional powerful magnets has been realized!
- Compared with the N-S-N-S structure of magnetic bars, the effective magnetic pole is 100% to provide a reliable separation effect.
- The employment of a sharp gradient construction enables it to continuously catch fine iron powder that cannot be caught by conventional iron-removing magnets.
- These magnets have been treated by KANETEC's original surface treatment technology to make them highly resistant to wear and corrosion.

[mm (in.)]



Model	Dimensions			Material	Surface Finish	Built-in Permanent Magnet	Surface Max. Magnetic Flux Density	Working Temp. Upper Limit	Mass
	A	B	C						
PCMN-TF1205	55 (2.16)	85 (3.34)	73 (2.87)	SUS304	#400 buffed	Nd rare earth type Property value 1.2 T (12,000 G)	1.4T (14000G)	80°C (176° F)	2.5kg/5.51 lb
PCMN-TF1210	105 (4.13)	135 (5.31)	123 (4.84)						5.0kg/11.0 lb
PCMN-TF1215	156 (6.14)	185 (7.28)	173 (6.81)						7.5kg/16.5 lb
PCMN-TF1220	207 (8.15)	235 (9.25)	223 (8.77)						10.0kg/22.0 lb
PCMN-TF1230	309 (12.1)	340 (13.3)	328 (12.9)						15.0kg/33.0 lb

MAGNETIC TOOLS & EQUIPMENT FOR MEDICAL OPERATION
LIFTING MAGNET
MAGBORE™
MAGNETIC EQUIPMENT FOR CONVEYANCE EQUIPMENT
MAGNETIZER AND ENVIRONMENTAL DEMAGNETIZER EQUIPMENT
MAGNETIC EQUIPMENT FOR CONVEYANCE
MAGNETIC SEPARATORS
POWERFUL MAGNETIC SEPARATORS
MEASURING INSTRUMENTS TOOLS
MAGNETIC MATERIALS