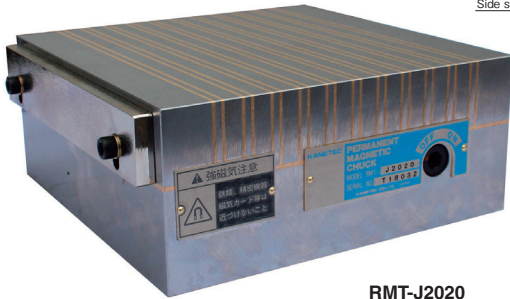
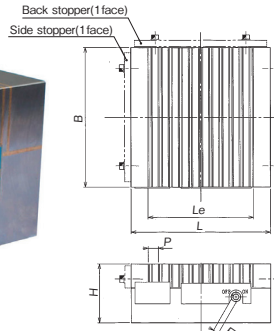


RMT / RMT-U / RMT-V / RMT-J / RMWH / RMWH-J

Model RMT-J ADDITIONALLY WORKABLE RECTANGULAR PERMANENT MAGNETIC CHUCK



RMT-J2020

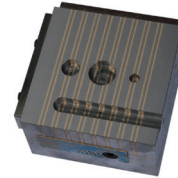


[Application]

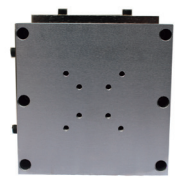
Powerful permanent magnetic chucks for a wide range of applications from heavy duty grinding to light duty cutting. Usable in liquid also.

[Features]

- By additionally machining the work face, it becomes possible to hold by magnetism such irregular shaped workpieces that cannot be held on a flat surface. Also by additionally making mounting holes on the mounting face, it becomes possible to mount the chuck on pallets, etc.
- The work face can be machined to a depth of 13 mm max. and the mounting face to a depth of 25 mm max.



<An example of additional work on work face>

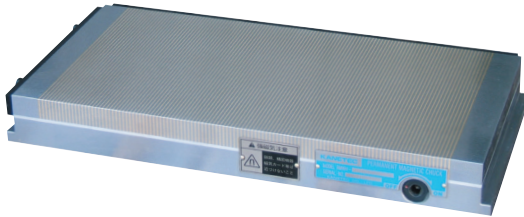


<An example of additional work on mounting face>

Model	Nominal Size	Work Face				Pole Pitch	Height	Handle Hole	Additionally Workable Depth		Mass
		B	L	Le	P				Work Face	Mounting Face	
RMT-J1515	150 (5.90) × 150 (5.90)	150 (5.90)	150 (5.90)	107.7 (4.24)	14.5 (1.5+3.2+1.5+8.3)	85 (3.34)	8 (0.31)	Max.13 (0.51)	Max.25 (0.98)	15kg/ 33.0 lb	
RMT-J2020	200 (7.87) × 200 (7.87)	200 (7.87)	200 (7.87)	151.2 (5.95)	0.57 (0.05+0.12+0.05+0.32)					27kg/ 59.5 lb	

※A hex wrench key is included with Model RMT-J1515 and a dedicated handle is included with Model RMT-J2020.

Model RMWH RECTANGULAR PERMANENT MAGNETIC MICROPITCH CHUCK



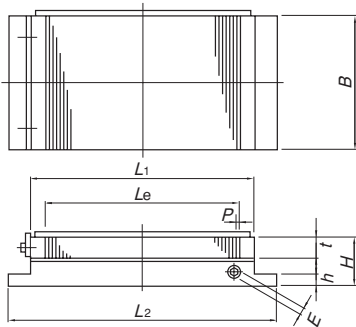
RMWH-2040C

[Application]

Suitable for grinding thin, thick and small workpieces.

[Features]

- Extremely low profile, 45 mm for small to medium sizes and 50 mm for large sizes and light weight.
- A wide attractive area on the chuck work face, allowing the corners to be utilized.
- The magnetic force ON-OFF handle can be operated lightly thanks to a special slide design. The side insert type used allows the handle to be detached when it is not used.
- A micropitch type having very fine pole-to-pole pitches. This design provides effective holding power not only on thick workpieces but also on thin and small workpieces.
- Drip-proof specification. (Not usable in liquid) ※ For use in liquid, please use Model RMWH-ED.



Model	Nominal Size	Work Face				Pole Pitch	Mounting Face		Height	Handle Hole	Mass
		B	L ₁	Le	t		B	L ₂			
RMWH-713C	75 (2.95) × 130 (5.11)	75 (2.95)	130 (5.11)	103 (4.05)		75 (2.95)	146 (5.74)			3.8kg / 8 lb	
RMWH-1018C	105 (4.13) × 175 (6.89)		175 (6.89)	142 (5.59)			191 (7.52)			7kg / 15 lb	
RMWH-1025C	105 (4.13) × 250 (9.84)	105 (4.13)	250 (9.84)	208 (8.18)		105 (4.13)	266 (10.4)			9.5kg / 20 lb	
RMWH-1030C	105 (4.13) × 300 (11.8)		300 (11.8)	256 (10.0)			316 (12.4)			11.5kg / 25 lb	
RMWH-1325C	130 (5.11) × 250 (9.84)	130 (5.11)	250 (9.84)	208 (8.18)		130 (5.11)	266 (10.4)			12kg / 26 lb	
RMWH-1515C	150 (5.90) × 150 (5.90)		150 (5.90)	118 (4.64)			166 (6.53)	10 (0.39)	45 (1.77)	8.5kg / 18 lb	
RMWH-1530C	150 (5.90) × 300 (11.8)	150 (5.90)	300 (11.8)	256 (10.0)			316 (12.4)			16.5kg / 36 lb	
RMWH-1535C	150 (5.90) × 350 (13.7)		350 (13.7)	298 (11.7)			366 (14.4)			19kg / 41 lb	
RMWH-1545C	150 (5.90) × 450 (17.7)		450 (17.7)	394 (15.5)			466 (18.3)			24.5kg / 53 lb	
RMWH-2035C	200 (7.87) × 350 (13.7)		350 (13.7)	298 (11.7)			366 (14.4)			26kg / 57 lb	
RMWH-2040C	200 (7.87) × 400 (15.7)	200 (7.87)	400 (15.7)	346 (13.6)	18 (0.70)	3 (1+2) (0.11)	416 (16.3)		8 (0.31)	29.5kg / 64 lb	
RMWH-2050C	200 (7.87) × 500 (19.6)		500 (19.6)	442 (17.4)			516 (20.3)			40kg / 88 lb	
RMWH-2060C	200 (7.87) × 600 (23.6)		600 (23.6)	541 (21.3)			616 (24.2)	14 (0.55)	50 (1.97)	48kg / 105 lb	
RMWH-2525C	250 (9.84) × 250 (9.84)	250 (9.84)	250 (9.84)	208 (8.18)			266 (10.4)	10 (0.4)	45 (1.77)	24kg / 52 lb	
RMWH-2530C	250 (9.84) × 300 (11.8)		300 (11.8)	256 (10.0)			316 (12.4)			28kg / 61 lb	
RMWH-3050C	300 (11.8) × 500 (19.6)	300 (11.8)	500 (19.6)	442 (17.4)			516 (20.3)	14 (0.55)	50 (1.97)	60kg / 132 lb	
RMWH-3060C	300 (11.8) × 600 (23.6)		600 (23.6)	541 (21.3)			616 (24.2)			72kg / 158 lb	

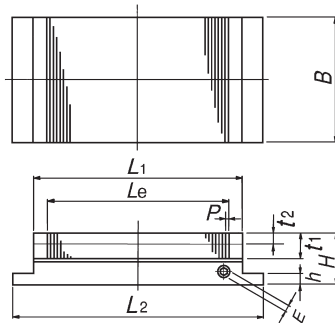
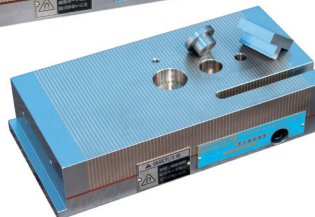
※As for the handle, a hex wrench key is included.

Model RMWH-J ADDITIONALLY WORKABLE RECTANGULAR PERMANENT MAGNETIC CHUCK



RMWH-J1325

<An example of additional work according to workpiece>



[Application]

Suitable for grinding thin, thick and small workpieces.

[Features]

- As with the standard Model RMWH, this is a micropitch type having very fine pole-to-pole pitches. This design provides effective holding power not only on thick workpieces but also on thin and small workpieces.
- Since the chuck work face can be machined to a depth of 15 mm max., workpieces that do not have a flat attractive face can also be held firmly.
- By machining holes and slots according to workpiece shapes in advance, the workpiece securing and setting up time can be reduced significantly when compared with the conventional mechanical clamping method.
- Since the face plate is thicker than the standard Model RMWH by 15 mm, this chuck can be used for a longer period of time in applications that require frequent self-cut.
- The chuck mounting section is made of iron, which allows the chuck to be held on an existing magnetic chuck.

Model	Nominal Size	Work Face				Pole Pitch	Mounting Face			Height	Processable Dimensions	Handle Hole	Mass
		B	L ₁	Le	t ₁		B	L ₂	h				
RMWH-J1325	130 (5.11) × 250 (9.84)	130 (5.11)	250 (9.84)	208 (8.18)	33 (1.29)	3 (1+2) (0.11) (0.03+0.07)	130 (5.11)	266 (10.4)	10 (0.39)	55 (2.16)	Max.15 (0.59)	8 (0.31)	15kg/ 33.0 lb

※As for the handle, a hex wrench key is included.

Sizes up to 130 mm wide × 250 mm long maximum available.

ELECTROMAGNETIC CHUCKS
CHUCK CONTROLLERS
PERMANENT MAGNETIC CHUCKS
ELECTROMAGNETIC CHUCKS
BLOCKS FOR MC
VACUUM CHUCKS
PROMELTA* SYSTEM
SINE BAR CHUCKS
BLOCKS HOLDERS, MINI CHUCKS
HOLDING TOOLS
MEASURING TOOL HOLDERS
MAGNETIC HOLDERS
MAGNETIC TOOLS