

Model **SBP-R•LS** COMPOUND TYPE PERMANENT MAGNETIC SINE BAR CHUCK

W type



SBP-R1530LS-A

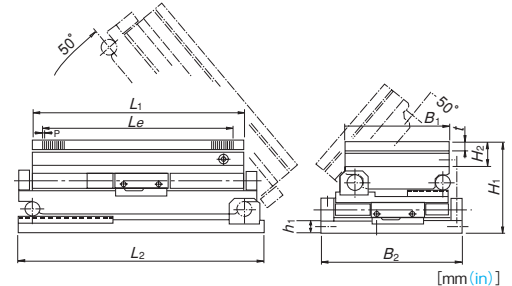
Gauge block not included.

[Application]

Permanent magnetic chucks to enable highly accurate composite inclination on the X axis and Y axis.

[Features]

- When one side is closed, the chuck acts as a single vertical or horizontal type.
- The whole sine bar part is made of special steel, which has been precisely ground after hardening.
- The major parts have been lapped to ensure highly precise grinding and measurement over a long period of time.
- Since a thin permanent magnetic chuck is used, this model is easy to handle and provides a wider machining space.
- These chucks employ a permanent magnet and therefore no heat is generated, which enables highly precise grinding.



Model	Nominal Size	Work Face				Pole Pitch P	Mounting Face			Height		Height at Max. Tilt	Tilt Angle	Angle Accuracy	Roller Center Distance	Mass	
		B <sub>1</sub>	L <sub>1</sub>	t	L <sub>e</sub>		B <sub>2</sub>	L <sub>2</sub>	H <sub>1</sub>	H <sub>2</sub>							
SBP-R1018LS-A	105 (4.13) × 175 (6.89)	105 (4.13)	175 (6.89)	18 (0.70)	143 (5.63)	3(1+2) 0.11 (0.03+0.07)	166 (6.53)	200 (7.87)	22 (0.86)	129 (5.07)	130 (5.11)	40 (1.57)	0° -50° Accuracy guaranteed range 0° -45°	0.007 / 100 max.	Upper 75 (2.95)	18kg / 39 lb	
SBP-R1325LS-A	130 (5.11) × 250 (9.84)	130 (5.11)	250 (9.84)		209 (8.22)		186 (7.32)	300 (11.8)		300 (11.8)					129 (5.07)	Upper 100 (3.93)	35kg / 77 lb
SBP-R1515LS-A	150 (5.90) × 150 (5.90)	150 (5.90)	150 (5.90)		119 (4.68)		200 (7.87)	210 (8.26)		210 (8.26)					130 (5.11)	Upper 125 (4.92)	25kg / 55 lb
SBP-R1530LS-A	150 (5.90) × 300 (11.8)	150 (5.90)	300 (11.8)		257 (10.1)		206 (8.10)	345 (13.5)		345 (13.5)					130 (5.11)	Upper 125 (4.92)	45kg / 99 lb

※A hex wrench key is included. For the mechanism of angle setting, see the bottom part on page 51. The conversion table included with the product facilitates angle setting.

Model **SBP-R•S** SINGLE TYPE PERMANENT MAGNETIC SINE BAR CHUCK

S type



SBP-R1018S-B

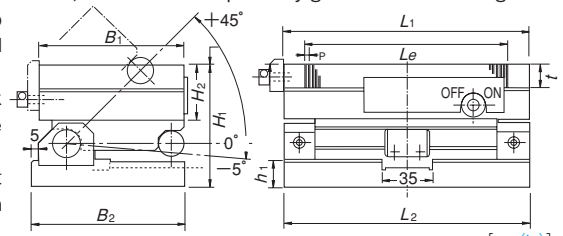
Gauge block not included.

[Application]

A laterally long type with the long side as the tilting axis for highly precise grinding and measurement.

[Features]

- A flat type as thin as 89 mm to 100 mm for a wide range of applications. With a thin permanent magnetic chuck mounted, this single type has been precisely finished to 0.007 mm or better.
- The whole sine bar part is made of special steel, which has been precisely ground after hardening.
- The major parts have been lapped to ensure highly precise grinding and measurement over a long period of time.
- Since a thin permanent magnetic chuck is used, this model is easy to handle and provides a wider machining space.
- These chucks employ a permanent magnet and therefore no heat is generated, which enables highly precise grinding.



Model	Nominal Size	Work Face				Pole Pitch P	Mounting Face			Height		Height at Max. Tilt	Tilt Angle	Angle Accuracy	Roller Center Distance	Mass	
		B <sub>1</sub>	L <sub>1</sub>	t	L <sub>e</sub>		B <sub>2</sub>	L <sub>2</sub>	h <sub>1</sub>	H <sub>1</sub>	H <sub>2</sub>						
SBP-R1018S-B	105 (4.13) × 175 (6.89)	105 (4.13)	175 (6.89)	18 (0.70)	142 (5.59)	3(1+2) 0.11 (0.03+0.07)	110 (4.33)	175 (6.89)	20 (0.78)	89 (3.50)	40 (1.57)	(117) (4.60)	-5° -45°	0.007 / 100 max.	75 (2.95)	9kg / 20 lb	
SBP-R1530S-B	150 (5.90) × 300 (11.8)	150 (5.90)	300 (11.8)		256 (10.0)		160 (6.29)	300 (11.8)	27 (1.06)	27 (1.06)					96 (3.78)	125 (4.92)	27kg / 60 lb
SBP-R1545S-B	150 (5.90) × 450 (17.7)	150 (5.90)	450 (17.7)		394 (15.5)		160 (6.29)	450 (17.7)	31 (1.22)	31 (1.22)					100 (3.93)	125 (4.92)	48kg / 106 lb

※A hex wrench key is included. For the mechanism of angle setting, see the bottom part on page 51. The conversion table included with the product facilitates angle setting.

Model **SBP-R•L** SINGLE TYPE PERMANENT MAGNETIC SINE BAR CHUCK

L type



SBP-R1018L-B

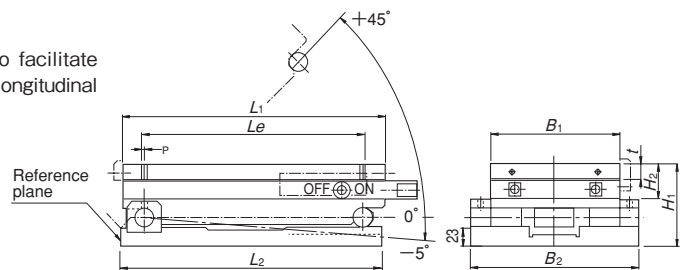
Gauge block not included.

[Application]

A longitudinally long type with the short side as the tilting axis for highly precise grinding and measurement. Suitable for highly precise angle grinding on mold grinders, etc.

[Features]

- A grip is provided to facilitate angle setting in the longitudinal direction.



Model	Nominal Size	Work Face				Pole Pitch P	Mounting Face			Height		Height at Max. Tilt	Tilt Angle	Angle Accuracy	Roller Center Distance	Mass	
		B <sub>1</sub>	L <sub>1</sub>	t	L <sub>e</sub>		B <sub>2</sub>	L <sub>2</sub>	H <sub>1</sub>	H <sub>2</sub>							
SBP-R1018L-B	105 (4.13) × 175 (6.89)	105 (4.13)	175 (6.89)	18 (0.70)	142 (5.59)	3(1+2) 0.11 (0.03+0.07)	151 (5.94)	175 (6.89)	89 (3.50)	40 (1.57)	40 (1.57)	(175.5) (6.90)	-5° -45°	0.007 / 100 max.	125 (4.92)	11kg / 24 lb	
SBP-R1530L-B	150 (5.90) × 300 (11.8)	150 (5.90)	300 (11.8)		256 (10.0)		196 (7.71)	300 (11.8)	103 (4.05)	103 (4.05)					103 (4.05)	250 (9.84)	32kg / 71 lb

※The tilting base setscrews are 6 mm wide across flats. A hex wrench key is included. For the mechanism of angle setting, see the bottom part on page 51. The conversion table included with the product facilitates angle setting.

ELECTROMAGNETIC CHUCKS  
CHUCK CONTROLLERS  
PERMANENT MAGNETIC CHUCKS  
PERMANENT ELECTROMAGNETIC CHUCKS  
BLOCKS FOR MC  
VACUUM CHUCKS  
PROMELTA\* SYSTEM  
SINE BAR CHUCKS  
BLOCKS HOLDERS, MINI CHUCKS  
HOLDING TOOLS  
MEASURING TOOL HOLDERS  
MAGNETIC HOLDERS  
MAGNETIC TOOLS