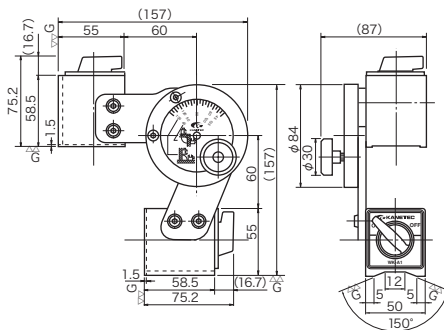


## Model MT-A MAGSUPPORTER\*

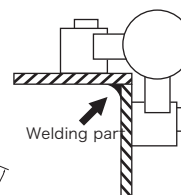


MT-A-2

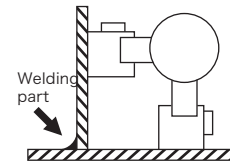


(Note 1)

(Inside welding)



(Outside welding)



Both applications possible by changing the attractive face.

### [Application]

Suitable for mating and keeping stationary jointing parts of iron sheets and members during welding work.

### [Features]

Powerful holding by use of a high performance permanent magnet.

### MT-A-2

- Both inside and outside welding are possible.

(Note 1)

- Any desired holding angle can be set in a range of 45° and 135° (angle scale provided).
- ON/OFF switchover function and V-groove provided.

### MT-A-4

- Any desired holding angle can be set in a range of 30° and 90° (angle scale provided).
- Angle adjustment with a handle.
- ON-OFF switchover function provided.

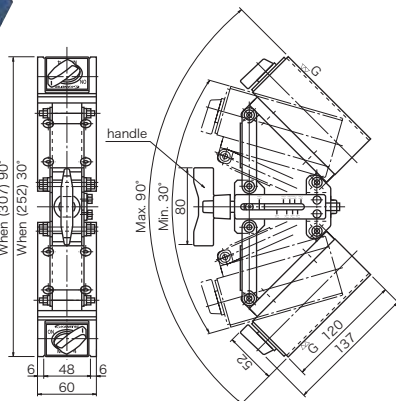
[mm (in)]

Model	Holding Power	Holder Dimensions			Angle	Mass
		Width	Length	Height		
MT-A-2	800N (80kgf) × 2	50 (1.96)	60 (2.36)	55 (2.16)	45°—135°	3.5kg/ 7.71 lb
MT-A-4	1500N (150kgf) × 2	60 (2.36)	120 (4.72)	52 (2.04)	30°—90°	5kg/ 11.0 lb

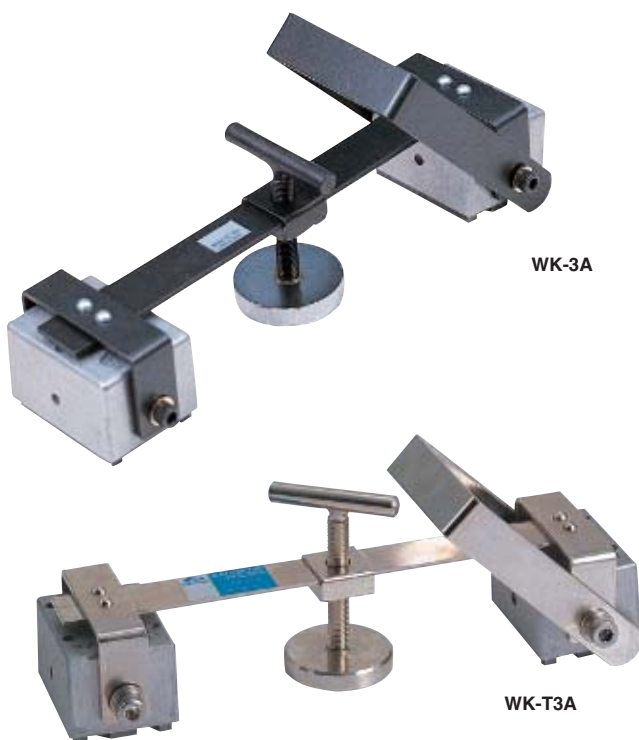
\*The holding power applies to SS400, thickness 10mm and ground surface.



MT-A-4



## Model WK WELDING CLAMPER



WK-3A

WK-T3A

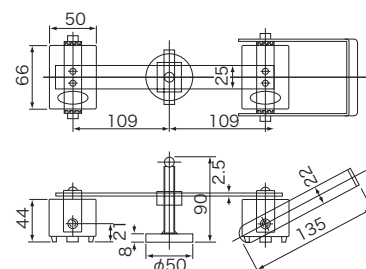
### [Application]

Suitable as holding tools for tentative installation and tack welding on such work sites of construction, bridge, ship building and piping.

### [Features]

- The magnet part has a minimum but enough free rotating angle range for easy mounting on workpieces.
- The exterior of the magnet holder part is made of aluminum to prevent adhesion of iron powder on the top and side faces.
- Model WK-T3A has a construction that is highly resistant to heat.
- These clammers have an enough mechanical strength to withstand rough handling.

### An example of usage



Model	Maximum Temperature	Holding Power	Mass
WK-3A	60°C	1000N (100kgf) × 2	2.3kg/5.07 lb
WK-T3A	180°C		

\*The holding power applies to SS400, thickness 10mm and ground surface.

MAGNETIC TOOLS FOR WELDING OPERATION  
 LIFTING MAGNET  
 MAGBORE  
 CHIP & SLUDGE ENVIRONMENTAL TRANSPORTERS & EQUIPMENT  
 MAGNETIZERS AND DENMAGNETIZERS  
 MAGNETIC EQUIPMENT FOR TRANSPORTATION  
 MAGNETIC SEPARATORS  
 HIGH GRADE MAGNETIC TOOLS  
 MEASURING INSTRUMENTS  
 MAGNETIC MATERIALS

**Model KM-W MAGNETIC HOLDER**



**Holding Power**  
200N  
KM-06W



**Holding Power**  
1300N  
KM-12W

**Usable as a hinge of thin plates and simple jig for welding operations.**

**[Application]**

Suitable for tentative holding during drilling and assembly.

**[Features]**

- Two magnets as a pair for easy angle setting.
- An angle scale provided. (KM-12W)
- The magnetic force can be turned on and off by operating the lever. (KM-12W)
- The V-groove allows the holder to be attached to certain poles and curved surfaces in addition to the flat surface. (KM-12W)

Model	Holding Power	Holder Dimensions			Angle	Length	Mass
		Width	Length	Height			
KM-06W	200N (20kgf)	26 (1.02)	60 (2.36)	25 (0.98)	129 (5.07)	Free	0.7kg/1.54 lb 4.5kg/9.92 lb
KM-12W	1300N (130kgf)	50 (1.96)	117 (4.60)	55 (2.16)	273 (10.75)		

※The holding power applies to SS400, thickness 10mm and ground surface.



**Model KM-SA HEXAGONAL MAGNETIC HOLDER**



KM-S1A

**Holding Power**  
Round steel 200~300N  
Steel plate 200~600N

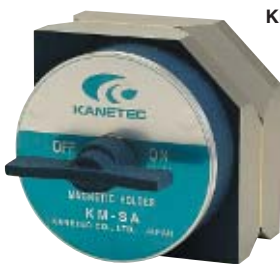


**[Application]**

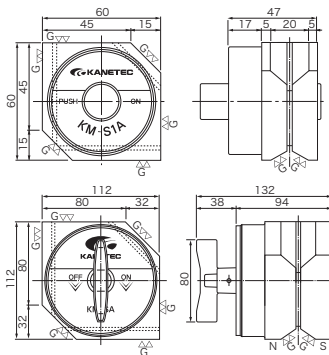
These holders provide a strong holding power for tentative holding during welding and tentative assembly. These holders can also be used as a block.

**[Features]**

- The holding angle can be set to 45°, 90° and 135°.
- The small type is equipped with a pushbutton and the large type with a rotary handle for turning on and off the magnetic force.



KM-SA



**Holding Power**  
Round steel 600~900N  
Steel plate 1200~1400N

Model	Holding Power		Dimensions	Mass
	Round Steel	Steel Plate		
KM-SA	600—900N (60—90kgf) 150—200N (15—20kgf)	1200—1400N (120—140kgf) 800—1000N (80—100kgf)	112(4.40) × 112(4.40) × 94(3.70)	6.0kg/ 13.2 lb
KM-S1A	200—300N (20—30kgf) 50—70N (5—7kgf)	200—600N (20—60kgf) 100—350N (10—35kgf)	60(2.36) × 60(2.36) × 42(1.65)	0.85kg/ 1.87 lb

※The holding power applies to iron plate, SS400, 10mm thickness, and ground-surface.

Note : The holding power in [ ] is for attraction on one face in the case of double-face attraction.

**Model KM-S HEXAGONAL MAGNETIC HOLDER**



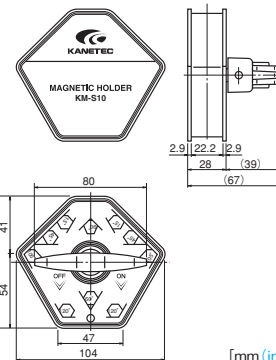
**Holding Power**  
Steel plate 150~250N  
KM-S10

**[Application]**

Usable to temporarily hold and assemble workpieces during welding. These holders hold workpieces firmly.

**[Features]**

- The workpiece holding angle can be selected from 15°, 45°, 60°, 90°, 105° and 120°.
- The magnetic force can be turned on and off.
- The holding power on steel plates is about the same as when both faces of KM-S9 and S12 are used and at angles other than 105°, the holding power does not drop when two faces are used.



**Holding Power**  
Steel plate 250~450N  
KM-S13



Model	Holding Power	Dimensions	Mass
	Steel Plate		
KM-S10	150—250N (15—25kgf)	104(4.09) × 95(3.74) × 67(2.63)	0.9kg/1.98 lb
KM-S13	250—450N (25—45kgf)	132(5.19) × 120(4.72) × 73(2.87)	1.6kg/3.52 lb

※The holding power applies to iron plate, SS400, 10mm thickness, and ground-surface.

MAGNETIC TOOLS FOR WELDING OPERATION

LIFTING MAGNET

MAGBORE

CHIP & SLUDGE TRANSPORTERS

ENVIRONMENTAL EQUIPMENT

MAGNETIZERS AND DEMAGNETIZERS

MAGNETIC EQUIPMENT FOR TRANSPORTATION

MAGNETIC SEPARATORS

HIGH GRADE MAGNETIC SEPARATORS

MEASURING INSTRUMENTS

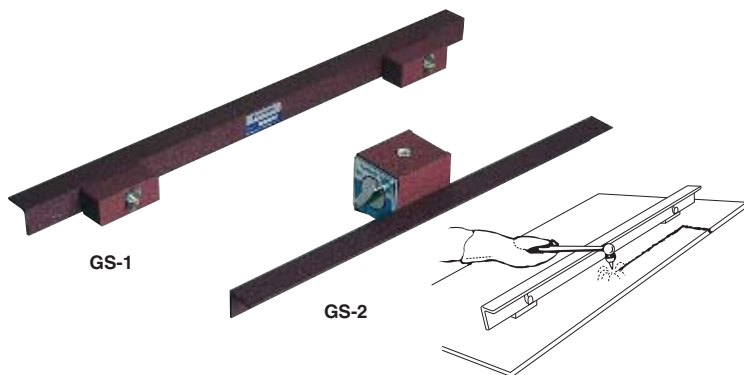
MEASURING TOOLS

MAGNETIC MATERIALS





**Model GS GUIDE SCALE**



**[Application]**

Special guide tools for moving the torch while maintaining the height of the nozzle during gas welding.

**[Features]**

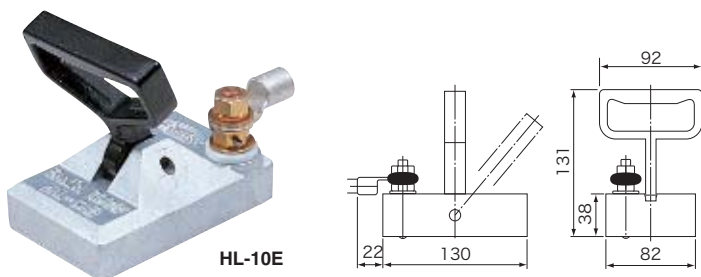
- A high performance permanent magnet holds the scale strongly.
- Model GS-1 allows scale up-down adjustment according to the height of the nozzle.
- Model GS-2 allows its magnetic force to be turned on and off with a lever for easy mounting and dismounting.

[mm (in)]

Model	Holding Power	Length	Width	Height	Mass
GS-1	200N (20kgf)	500 (19.6)	85 (3.34)	70 (2.75)	1.1kg/2.42 lb
GS-2	800N (80kgf)	400 (15.7)	68 (2.67)	40 (1.57)	2.3kg/5.07 lb

※GS-2 can be mounted and dismounted easily with a select lever.  
 ※The holding power applies to SS400, thickness 10mm and ground surface.

**Model HL-E EARTH CLAMP**



**[Application]**

Capable of connecting earth terminals on a wide variety of faces.

**[Features]**

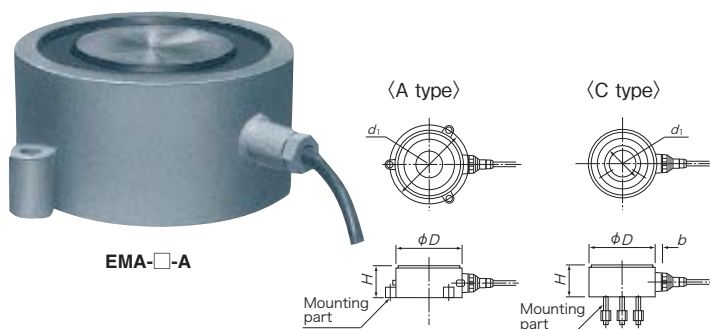
- A high performance permanent magnet is used for easy mounting and dismounting by "one-touch" operation.

[mm (in)]

Model	Holding Power	Current Capacity	Mass
HL-10E	1600N (160kgf)	300A	1.5kg/3.30 lb

※The holding power applies to 16 mm thick mill scale steel plates.

**Model EMA WELDING JIG**



**[Application]**

Jigs developed for automatic welding of steel plates to hold steel plates and backing materials.

These jigs can be used to hold cut-out pieces during EPM welding operations, to straighten workpieces and to secure stacked steel plates during fusing of stacked steel plates.

**[Features]**

- Holding and releasing can be controlled electrically.
- Workpieces are secured to a welding frame by a strong magnetic force and therefore warping of steel plates due to welding heat can be prevented.
- Waterproof construction for use for outdoor operations. Highly resistant to impact and heat.

[mm (in)]

Model	Holding Power		Dimensions				Power Source		Mass	
	Steel Plate 20mm thick	Steel Plate 50mm thick	D	H	d <sub>1</sub>	b	Clamp Hole	Voltage		Current
EMA-25-A	20kN (2000kgf)	24kN (2400kgf)	245 (9.64)	100 (3.93)	290 (11.4)	70 (2.75)	3 (0.11) - φ21 (0.82)	200 VDC	1.0 A	30kg/66.1 lb
EMA-25-C					150 (5.90)		3 (0.11) - M16 (0.62)			
EMA-26-A	21kN (2100kgf)	36kN (3600kgf)	255 (10.0)	120 (4.72)	305 (12.0)	4 (0.15) - φ26 (1.02)	1.4 A		40kg/88.1 lb	
EMA-30-A	25kN (2500kgf)	50kN (5000kgf)	296 (11.6)	150 (5.90)	340 (13.3)	3 (0.11) - φ23 (0.90)	1.75A		65kg/143 lb	
EMA-30-C					200 (7.87)	3 (0.11) - M20 (0.78)				

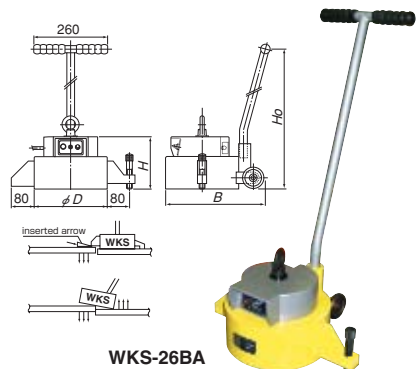
**Model WKS WELDING JIG**

**[Application]**

Electromagnetic device, which can easily adjust positioning during temporary welding work of iron plates.

**[Features]**

- It can be attracted at the meeting point by a turn of the switch.
- Amending work can be done easily by inserting an arrow end point.
- Series of WKS-26 and 30 is supplied with wheel for its easy moving.
- WKS-15 type is handy type which is easily to move or handled manually at working site.
- Supplied with a rectifier.



[mm (in)]

Model	Holding Power		Dimensions				Power Source		Mass
	Steel Plate 20mm thick	Steel Plate 50mm thick	D	H	B	Ho	Voltage	Current	
WKS-16BA	8kN (800kgf)	10kN (1000kgf)	162 (6.37)	186 (7.32)	—	—	AC200V	0.5 A	Approx 16kg/35.2 lb
WKS-26BA	20kN (2000kgf)	36kN (3600kgf)	258 (10.1)	185 (7.28)	435 (17.1)	813 (32.0)		1.5 A	Approx 50kg/110 lb
WKS-30BA	25kN (2500kgf)	50kN (5000kgf)	296 (11.6)	220 (8.66)	473 (18.6)	828 (32.5)		1.5 A	Approx 70kg/154 lb

WKS-26BA

MAGNETIC TOOLS FOR WELDING OPERATION

LIFTING MAGNET

MAGBORE

CHIP & SLUDGE TRANSPORTERS

ENVIRONMENTAL EQUIPMENT

MAGNETIZERS AND DEMAGNETIZERS

MAGNETIC EQUIPMENT FOR TRANSPORTATION

MAGNETIC SEPARATORS

HIGH GRADE MAGNETIC SEPARATORS

MEASURING TOOLS

MEASURING INSTRUMENTS

MAGNETIC MATERIALS