

## Good Recovery Capability!

SLUDGE CONVEYANCE EQUIPMENT

# MAGCLEAN®

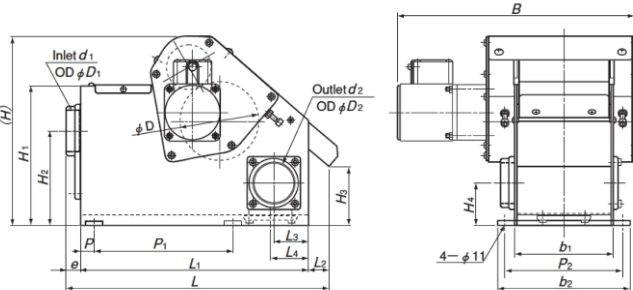
New type improved to collect and discharge the sludges!



## MS-FB series

- ◆ We improved the magnet drum, so it's possible to collect the sludges smoothly when a lot of sludge inflow, and to prevent overflow.
- ◆ It's possible to use all kinds of difficult things due to sludge properties and the kind of grindstone.
- ◆ Processing Capacity is seven type.
- ◆ It's possible to mount various machines with height-adjustable leg and diversion box.
- ◆ A type having a motor on the right side is also available.

**NEW** MS-4FB



Please check movie!

Model	Processing Capacity	Power Source	Motor	Dimensions																	Mass													
				L	B	H	L1	L2	L3	L4	e	P	P1	P2	b1	b2	H1	H2	H3	H4		D	D1	d1	D2	d2								
MS-2FB	20L/min	3-phase 200 VAC/ 220 VAC, 50/60Hz	25W	375 (14.7)	278 (10.9)	271 (10.6)	330 (12.9)	50 (1.96)	55 (2.16)	15 (0.59)	200 (7.87)	120 (4.72)	91 (3.58)	141 (5.55)	200 (7.87)	135 (5.31)	84 (3.30)	60 (2.36)	114 (4.48)	57 (2.24)	PS-1- 1/2	70 (2.75)	PS-2	15kg/ 33lb										
MS-4FB	40L/min			380 (14.9)	328 (12.9)							378 (14.8)	65 (2.55)	65 (2.55)						20 (0.78)	220 (8.66)			170 (6.69)	141 (5.55)	191 (7.52)	291 (11.4)	341 (13.4)	142 (5.59)	60 (2.36)	70 (2.75)	85 (3.34)	PS-2- 1/2	21kg/ 46lb
MS-6FB	60L/min			510 (20.0)	505 (19.8)							286 (11.2)	460 (18.1)	86 (3.38)						86 (3.38)	20 (0.78)			270 (10.6)	320 (12.6)	291 (11.4)	341 (13.4)	391 (15.3)	441 (17.3)	151 (5.94)	67 (2.63)	85 (3.34)	PS-2- 1/2	102 (4.01)
MS-8FB	80L/min		515 (20.2)	605 (23.8)	321 (12.6)	600 (23.6)	80 (3.14)	95 (3.74)	25 (0.98)	400 (15.7)	320 (12.6)	291 (11.4)	341 (13.4)	391 (15.3)	441 (17.3)	151 (5.94)	67 (2.63)	85 (3.34)	PS-2- 1/2	102 (4.01)	PS-3	38kg/ 83lb												
MS-12FB	120L/min		515 (20.2)	605 (23.8)							86 (3.38)	86 (3.38)	20 (0.78)	270 (10.6)	320 (12.6)	291 (11.4)	341 (13.4)	391 (15.3)	441 (17.3)	491 (19.3)	151 (5.94)	67 (2.63)	85 (3.34)	PS-2- 1/2	102 (4.01)	PS-3	45kg/ 99lb							
MS-18FB	180L/min		655 (25.7)	705 (27.7)	321 (12.6)	600 (23.6)	80 (3.14)	95 (3.74)	25 (0.98)	400 (15.7)	470 (18.5)	441 (17.3)	491 (19.3)	541 (21.3)	250 (9.84)	165 (6.49)	95 (3.74)	77 (3.03)	102 (4.01)	PS-3	—	PS-4	50kg/ 110lb											
MS-24FB	240L/min		655 (25.7)	705 (27.7)							86 (3.38)	86 (3.38)	20 (0.78)	270 (10.6)	320 (12.6)	291 (11.4)	341 (13.4)	391 (15.3)	441 (17.3)	491 (19.3)	151 (5.94)	67 (2.63)	85 (3.34)	PS-2- 1/2	102 (4.01)	PS-3	—	PS-4	50kg/ 110lb					

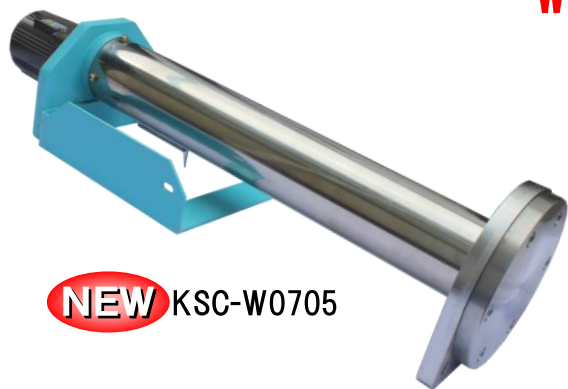
[mm (in)]

# SPIRAL MAGNETIC CONVEYOR

# KSC-W series

## Waterproof function as standard equipment !

- ◆ Suitable for a means to transfer chips produced from machining to a point of collection.
- ◆ It's possible to collect chips into water to add waterproof function.



**NEW** KSC-W0705

Small, medium, large. Each series has various sizes.

Model	Nominal Size	Processing Capacity	Power Source	Motor	Revolution	Mass
KSC-W0505 (Small Size)	φ50(1.96) × 500(19.6)	60kg/h	3-phase 200/220 VAC	25W	30/36rpm (50/60Hz)	6kg/ 13.2lb
KSC-W0705 (Medium Size)	φ75(2.95) × 500(19.6)	90kg/h				15kg/ 33.0lb
KSC-W1115 (Large Size)	φ115(4.52) × 1500(59.0)	250kg/h		40W		46kg/101.4lb

※If you want the special length, please let us know.

※The flange is waterproof, but the motor don't use into water.

# MAGNETIC CONVEYANCE EQUIPMENT TRANSFERLESS CONVEYOR

# 「CREEPER MAG」

# KSCL- series

Make-to-order product

Patent pending



KSCL-0517-S

(An example of special fabrication)

## Make-to-order product ! Correspond to space !

- ◆ It's possible to set up a bending direction and angle depending on your installation situations.
- ◆ It's easy to put narrow space so that the pipe diameter became thinner.

Model	Max. Length	Pipe diameter	Min. bending radius	Max. bending number	Processing Capacity	Power Source	Motor	Mass
KSCL-05	4m(157.4)	50(1.96)	250(9.84)	Twice	10kg/h※1	3-phase 200/220 VAC	25W※2	12kg/26.4lb

※1 The processing capacity is the value with SS400 chip-like chips in the KSCL-0517-S specification.

※2 It changes according to the specification such as length.

# WATERPROOF MAGHAND®

# HMW series

## Ideal for removal of chips in liquid!



- ◆ The long attractive part allows collection of a large volume of iron pieces.
- ◆ The small-dia. attractive part allows this model to be usable in limited space and grooves.

Model	Capacity	Length	Attractive Part Dimensions	Mass
HMW-FC50	chip(dry) Approx.200g/0.44lb	590(23.2)	φ26.5(1.04) × 210(8.26)	1.0kg/2.20lb
HMW-FC90	shot blast balls Approx.1.2kg/2.64lb	990(38.9)		1.1kg/2.42lb
HMW-NS90	chip(dry) Approx.400g/0.88lb	993(39.0)	□28.6(1.12) × 230(9.05)	1.7kg/3.74lb
	shot blast balls Approx.1.9kg/4.18lb			



### INTERNATIONAL DEPARTMENT

No. 2-9, 3-chome, Iwamoto-cho, Chiyoda-ku Tokyo 101-0073 Japan

TEL : +81-3-5823-7013

FAX : +81-3-5823-7018

Home page address: <http://www.kanetec.co.jp/>

E-mail address: [kokusai\\_01@kanetec.co.jp](mailto:kokusai_01@kanetec.co.jp)

※ The products marked by ® are the registered trademarks of Kanetec Co., Ltd. in Japan.

※ The products listed in this catalog are subject to change in models, appearance and specifications without notice.