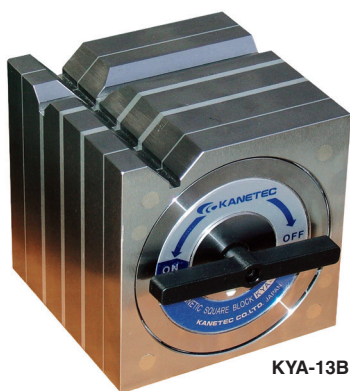


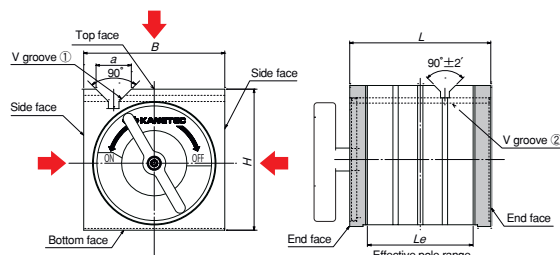
BLOCKS, HOLDERS, MINI CHUCKS

Model KYA SQUARE TYPE BLOCK



KYA-13B

The areas in the following figure do not hold workpieces



↑ indicates the attractive face.

[Application]

Holding tools for marking and light duty machining.
Holding tools for three-dimensional measuring instruments and various measuring systems.

[Features]

- Workpieces can be held on three faces of the top (V face) and both side faces.
- The ON/OFF lever is detachable. (The length of the opposite sides of the hex hole is 8 mm.)
- Drip-proof and oil-resistant construction.
- An M8 tapped hole is provided on the top for lifting (KYA-18 and 20B only).
- Ultra-precision finishing is also available. Please contact us.

[mm (in)]

Model	Holding Power		Applicable Diameter		Dimensions					Mass
	V groove①	V groove②	V groove①	V groove②	B	H	L	Le	a	
KYA- 8B	120N (12kgf)	100N (10kgf)	φ 10 (0.39) - φ 25 (0.98)	φ 8 (0.31) - φ 15 (0.59)	80 (3.14)	80 (3.14)	80 (3.14)	60 (2.36)	20 (0.78)	3.5kg / 7.7 lb
KYA-10B	200N (20kgf)	120N (12kgf)	φ 10 (0.39) - φ 35 (1.37)	φ 10 (0.39) - φ 30 (1.18)	100 (3.93)	100 (3.93)	100 (3.93)	72 (2.83)	26 (1.02)	7kg / 15 lb
KYA-13B	300N (30kgf)	250N (25kgf)	φ 10 (0.39) - φ 40 (1.57)	φ 10 (0.39) - φ 26 (1.02)	125 (4.92)	125 (4.92)	125 (4.92)	87 (3.42)	30 (1.18)	14kg / 30 lb
KYA-15B	400N (40kgf)	400N (40kgf)		φ 10 (0.39) - φ 38 (1.49)	150 (5.90)	150 (5.90)	150 (5.90)	107 (4.21)	32 (1.25)	23kg / 50 lb
KYA-18B		300N (30kgf)	φ 14 (0.55) - φ 50 (1.96)	φ 14 (0.55) - φ 50 (1.96)	180 (7.08)	180 (7.08)	180 (7.08)	123 (4.84)	38 (1.49)	37kg / 81 lb
KYA-20B	650N (65kgf)	650N (65kgf)			200 (7.87)	200 (7.87)	200 (7.87)	155 (6.10)		51kg / 112 lb

※The holding power is based on the V face and φ20 round steel bar. ※For accuracy, see the table below.

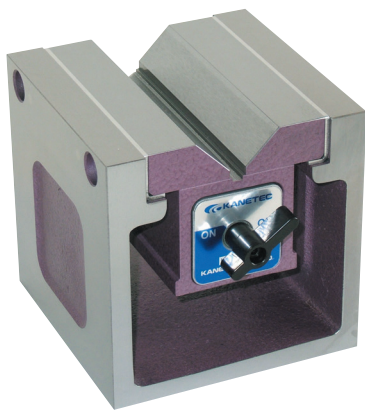
※Note that when workpieces are held on two or more faces simultaneously, the holding power of each face drops.

KYA accuracy

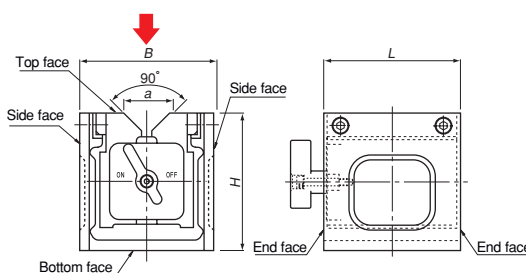
(μm)

Item	Model · Accuracy	KYA-8B		KYA-10B		KYA-13B		KYA-15B		KYA-18B		KYA-20B	
		Standard	Special	Standard	Special	Standard	Special	Standard	Special	Standard	Special	Standard	Special
Parallelism	Bottom face to top face	10	7	10	7	15	8	15	8	20	9	20	9
	Bottom face to V face												
	End face to end face												
	Side face to V face												
Flatness of bottom face		10		10		15		15		20		20	
Squareness	Bottom face to side face	20	10	20	10	25	12	25	12	30	14	30	14

Model KYB SQUARE TYPE BLOCK



KYB-13A



↑ indicates the attractive face.

[Application]

Holding tools for marking and light duty machining.
Holding tools for three-dimensional measuring instruments and various measuring systems.

[Features]

- A workpieces can be held on one face of the top (V face).
- The ON/OFF lever is detachable. (The length of the opposite sides of the hex hole is 8 mm.)
- Drip-proof and oil-resistant construction.
- Ultra-precision finishing is also available. Please contact us.

[mm (in)]

Model	Holding Power	Applicable Diameter	Dimensions				Mass
			B	H	L	a	
KYB- 8A	180N (18kgf) or over.	φ 10 (0.39) - φ 32 (1.25)	80 (3.14)	80 (3.14)	80 (3.14)	29 (1.02)	2.5kg / 5.5 lb
KYB-10A	343N (35kgf) or over.	φ 13 (0.51) - φ 50 (1.96)	100 (3.93)	100 (3.93)	100 (3.93)	40 (1.57)	6kg / 13 lb
KYB-13A	400N (40kgf) or over.		125 (4.92)	125 (4.92)	125 (4.92)		8kg / 17 lb
KYB-15A	589N (60kgf) or over.	φ 14 (0.55) - φ 66 (2.59)	150 (5.90)	150 (5.90)	150 (5.90)	50 (1.96)	12kg / 26 lb
KYB-18A	600N (60kgf) or over.		180 (7.08)	180 (7.08)	180 (7.08)		16kg / 35 lb
KYB-20A	785N (80kgf) or over.		200 (7.87)	200 (7.87)	200 (7.87)		22kg / 48 lb

※The holding power is based on the V face and φ20 round steel bar. ※For accuracy, see the table below.

KYB accuracy

(μm)

Item	Model · Accuracy	KYB-8A		KYB-10A		KYB-13A		KYB-15A		KYB-18A		KYB-20A	
		Standard	Special	Standard	Special	Standard	Special	Standard	Special	Standard	Special	Standard	Special
Parallelism	Bottom face to top face	10	7	10	7	15	8	15	8	20	9	20	9
	Bottom face to V face												
	End face to end face												
	Side face to V face												
Flatness of bottom face		10		10		15		15		20		20	
Squareness	Bottom face to side face	20	10	20	10	25	12	25	12	30	14	30	14

■The dimensional accuracy of KYA and KYB is based on KANETEC in-house standards. If you require higher accuracy, please contact us.