

Model KCC-AR WATER-COOLED ROUND ELECTROMAGNETIC CHUCK



KCC-35AR

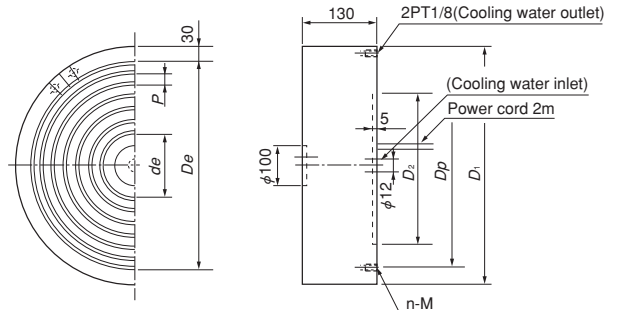
Chuck controller required additionally

[Application]

Suitable for grinding by rotary grinders.

[Features]

- Very little accuracy change. KANETEC's unique cooling mechanism minimizes temperature rise. Deformation of the chuck is minimized, thus making it most suitable for high precision grinding operations.



Model	Nominal Size	Work Face			Pole Pitch P	Mounting Face				Height	Voltage	Current	Mass	Electro Chuck Master	Remarks
		D ₁	D _e	d _e		D ₂	D _p	M	n						
KCC-35AR	350 (13.7)	350 (13.7)	316 (12.4)	145 (5.70)	14 (3+11) (0.55)	200 (7.87)	250 (9.87)	M10	4 pcs	130 (5.11)	90 VDC	0.75A	82kg/180 lb	ES-M103B ES-M305B EH-V305A EH-VE305A Above models except for the one marked by ※.	※ For types with a combination of a rectifier and demagnetizer, see pages of "Chuck Controllers." P17-P20
KCC-40AR	400 (15.7)	400 (15.7)	341 (13.4)	139 (5.47)		250 (9.87)	300 (11.8)	M12 (0.47)							
KCC-50AR	500 (19.6)	500 (19.6)	441 (17.3)	183 (7.20)		350 (13.7)	400 (15.7)								
KCC-60AR	600 (23.6)	600 (23.6)	541 (21.3)	171 (6.73)		450 (17.7)	500 (19.6)								
KCC-70AR	700 (27.5)	700 (27.5)	641 (25.2)	159 (6.26)		550 (21.6)	600 (23.6)								
KCC-80AR	800 (31.5)	800 (31.5)	741 (29.1)	147 (5.78)	650 (25.5)	700 (27.5)									

※ A cooler unit is required additionally. ※ If the magnetic force needs not be adjusted, use ES-M.
※ The chuck controller and clamp parts are not included. The KANETEC chucks work best when a KANETEC chuck controller is used.

Model LCU COOLER UNIT

Cooling water radiation and circulation unit



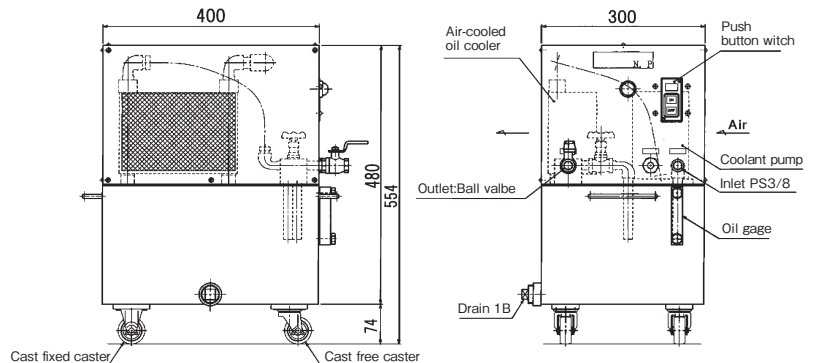
LCU-2A

[Application]

An air cooler unit to cool and circulate coolant in water-cooled type chucks.

[Features]

- The flow rate can be adjusted with a valve.
- Simple and compact for easy installation.
- Synchronized with room temperature by an air-cooled oil cooler.



Model	Discharge Amount	Total Lift	Power Source	Required Power	Dimensions	Tank Capacity	Mass	Accessories
LCU-2A	30 ℓ / 43 ℓ / min (50 / 60Hz)	2m (78.7)	Single phase 100 VAC (50 / 60Hz)	70W	300 (11.8) × 400 (15.7) × 554 (21.8)	20 ℓ	30kg/66 lb	Power cable 3 m (118)

※ The recommended coolant is automotive long life coolant.
※ The electromagnetic chucks to use must be those that consume less than 300 W (90V, 3.3 A).

ELECTROMAGNETIC CHUCKS
CHUCK CONTROLLERS
PERMANENT ELECTROMAGNETIC CHUCKS
PERMANENT ELECTROMAGNETIC CHUCKS
BLOCKS FOR MC
VACUUM CHUCKS
PROMELTA* SYSTEM
SINE BAR CHUCKS
BLOCKS HOLDERS, MINI CHUCKS
HOLDING TOOLS
MEASURING TOOL HOLDERS
MAGNETIC HOLDERS
MAGNETIC TOOLS