

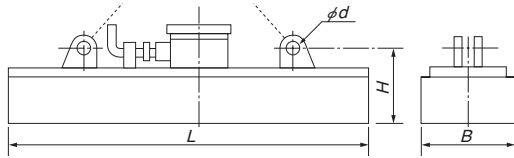
Model LM-EP RECTANGULAR ELECTROMAGNETIC LIFMA* FOR STEEL PLATE

Control unit required additionally
(Quoted when requested)

LM-40150EP3



(The photo shows an example of special order)



[Application]

Mounted on a beam for such operations as transporting, sorting, dewatering and shipping of steel plates.

[Features]

- The number of pieces to lift can be controlled accurately by the control unit.
- Easy-to-operate and trouble-free mechanism.
- The employment of an uninterruptible power supply prevents lifted workpieces from falling in the event of power failure.

An example of fabrication



[mm (in)]

Model	Max. Holding Power	Dimensions				Voltage	Current	Power Consumption	Mass	Working Rate	Remarks
		B	L	H	D						
LM-20120EP3	100kN (10000kgf)	200 (7.87)	1200 (47.2)	190 (7.48)	24 (0.94)	210 VDC	5.1A	1.07kW	180kg / 396 lb	50%ED Repeating cycle of power on 5 min. and pause 5 min.	The control unit is optimally designed according to the number of pieces to control. The lifting chain, etc. are optional.
LM-20200EP3	170kN (17000kgf)		2000 (78.7)		32 (1.25)		8.3A	1.74kW	340kg / 749 lb		
LM-30100EP3	150kN (15000kgf)	300 (11.8)	1000 (39.4)	180 (7.08)	26 (1.02)		6.0A	1.26kW	250kg / 551 lb		
LM-30120EP3	180kN (18000kgf)		1200 (47.2)		32 (1.25)		7.1A	1.50kW	300kg / 561 lb		
LM-30180EP3	260kN (26000kgf)	400 (15.7)	1800 (70.9)	190 (7.48)	35 (1.37)		9.1A	1.90kW	450kg / 992 lb		
LM-40150EP3	300kN (30000kgf)		1500 (59.0)				220 (8.66)	11.9A	2.50kW		

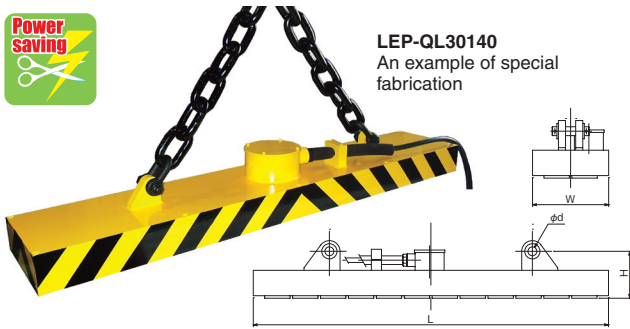
Model LEP-QL LARGE PERMANENT ELECTROMAGNETIC LIFMA*

Long beam type designed for large workpieces

Control unit required additionally (Quoted when requested)



LEP-QL30140
An example of special fabrication



[Application]

Permanent electromagnetic Lifmas that allow electrical control of magnetizing and demagnetizing the built-in permanent magnet. Suitable for transporting steel plates and iron products that have a flat attractive face and can be held on the whole face.

[Features]

- A power-saving type requiring only momentary supply of electricity (power on).

[mm (in)]

Model	Max. Holding Power	Dimensions				Electrical Capacity	Mass	Remarks
		W	L	H	d			
LEP-QL3074	120kN (12000kgf)	300 (11.8)	740 (29.1)	110 (4.33)	24 (0.94)	11.5kVA	180kg / 396 lb	The control unit is quoted when requested. The lifting chain is optional.
LEP-QL30107	180kN (18000kgf)		1070 (42.1)		30 (1.18)	17.2kVA	250kg / 551 lb	
LEP-QL30140	240kN (24000kgf)		1400 (55.1)		35 (1.37)	22.9kVA	330kg / 727 lb	

An example of special Lifma with beam

(Lifting bundled pipes)



(Lifting steel plates)



Other types are available according to your requirements and specifications.



Keep in mind that the capacity of the Lifma varies largely depending on the thickness and material of workpieces, clearance and other factors.

MAGNETIC TOOLS & EQUIPMENT FOR LIFTING OPERATION
 LIFTING MAGNET
 MAGBONE*
 CHIP & SLUDGE CONVEYANCE EQUIPMENT
 ENVIRONMENTAL EQUIPMENT
 MAGNETIZER AND DEMAGNETIZER
 MAGNETIC EQUIPMENT FOR CONVEYANCE
 MAGNETIC SEPARATORS
 POWERFUL MAGNETIC SEPARATORS
 MEASURING TOOLS
 MEASURING INSTRUMENTS
 MAGNETIC MATERIALS