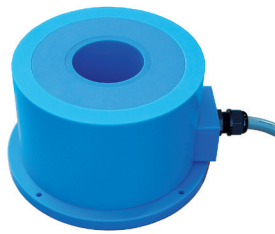


Model KRMD / KRMD CAPACITOR TYPE DEMAGNETIZER (CONTROL UNIT / DEDICATED DEMAGNETIZING COIL)

Outstanding demagnetization on workpieces that are difficult to demagnetize with conventional demagnetizers!



KRMD-10020

KRMD-R08

Capacitor type demagnetizer control unit [mm (in)]

Model	Input	Output	Dimensions			Mass	Remarks
			Width	Length	Height		
KRMD-25020	3-phase 200/220 VAC 50/60Hz	0-2500 VDC	800 (31.4)	800 (31.4)	800 (31.4)	180kg/ 396 lb	Indoor, dust-proof, self-supporting
KRMD-10020		1000 VDC	700 (27.5)	530 (20.8)	875 (34.4)	110kg/ 242 lb	

※ External operation is required for ON/OFF. Input signals need to be provided by the user or please procure the optional remote control box and foot switch.

Dedicated demagnetizing coil [mm (in)]

Model	Dimensions		Demag. Hole Dia.	Max. Applicable Voltage	Mass
	OD	Height			
KRMD-R08	230 (9.05)	135 (5.31)	φ 75 (2.95)	1000 VDC	10kg/22.0 lb

※ Special types are also available. Please contact us.

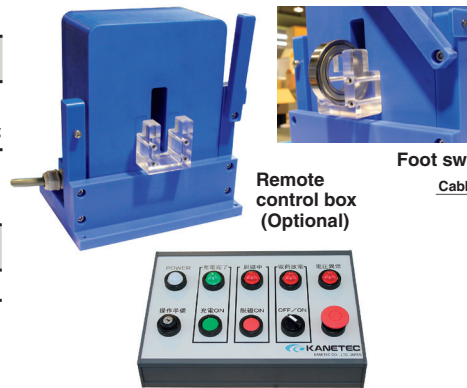
- ※ A charging contactor (KRMD-MC) is also available.
- Dedicated high capacity shutdown relay
- Size L110 (4.33) × D63 (2.48) × H74.7 (2.94) mm (in)
- ※ 2 pieces/set

[Application]

Suitable for demagnetizing workpieces such as bearings that are difficult to demagnetize with conventional demagnetizers.

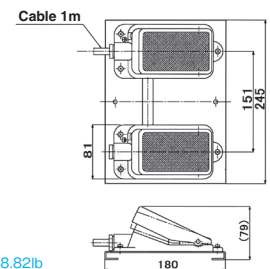
[Features]

- High voltage charged to a large capacitor in the control unit is discharged to the demagnetizing coil to momentarily demagnetize workpieces by use of LCR resonance and strong magnetic field.
- The time required from charging to discharging is only about 10 seconds.
- Workpieces on the conveyor can be demagnetized. (However, in order to demagnetize workpieces, it is necessary to keep them stopped inside the coil as with the stationary type.)
- As the capacity has been increased, coil design according to applications is possible. (KRMD-25020)



An example of demagnetizing bearings with tunnel type demagnetizing coil (special design)

Foot switch (Optional)



KRMD-OP1
L320 (12.5) × D210 (8.26) × H106 (4.17) mm (in) Mass 4kg/8.82lb

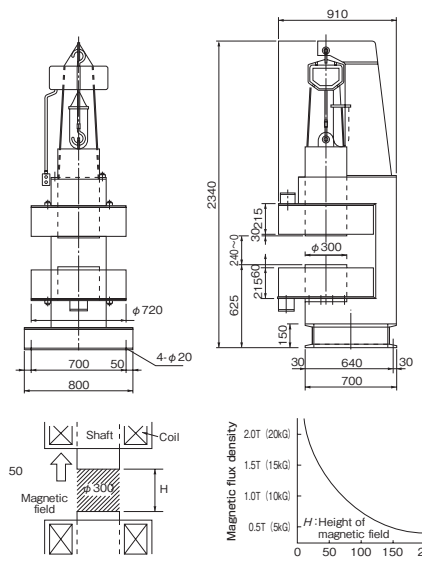
MAGNETIZER

MFG

Model MFG MAGNETIC FIELD GENERATOR



MFG-300



<Controller>



LMT-230

[Application]

Produces a powerful magnetic field for magnetization of magnetic materials and seed magnetic field treatment in agriculture and gardening.

[Features]

- A simple configuration for installation within a floor area less than 1m².

Main unit

Model	Rating	Magnetic Flux Density	Mass
MFG-300	260 VDC-21A	Max.2T (20kG)	2800kg/6173 lb

Controller

Model	Power Source	Output	Dimensions			Mass
			Width	Depth	Height	
LMT-230	3-phase 200 VAC	260 VDC-Max.30A	800 (31.5)	400 (15.7)	1800 (70.8)	250kg/551 lb

MAGNETIC TOOL & EQUIPMENT FOR WELDING OPERATION
LIFTING MAGNET
MAGBORG
CHIP & SLUDGE CONVEYANCE EQUIPMENT
MAGNETIZER AND ENVIRONMENTAL EQUIPMENT
MAGNETIC FIELD GENERATOR
MAGNETIC EQUIPMENT FOR CONVEYANCE
MAGNETIC SEPARATORS
POWERFUL MAGNETIC SEPARATORS
MEASURING TOOLS
MAGNETIC INSTRUMENTS
MAGNETIC MATERIALS