

PERMANENT MAGNETIC CHUCKS

Model RMT-ED RECTANGULAR PERMANENT MAGNETIC CHUCK WITH JET HOLE



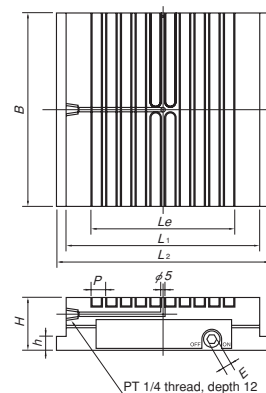
RMT-ED2525

[Application]

Suitable for securing workpieces during electric discharge machining.

[Features]

- Can be used in liquid.
- With extra powerful holding, these chucks are suitable for applications that require strong holding power.
- A jet hole is provided for jet-stream machining.
- The bottom face is made flat to allow providing tapped holes for clamp fixtures.
- Counter boring around the jet hole on the attractive face is possible.
- The water-tightness performance has been improved over the standard type.

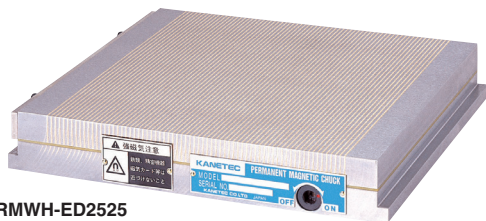


[mm (in)]

Model	Nominal Size	Work Face			Pole Pitch P	Mounting Face			Height H	Handle Hole E	Mass
		B	L ₁	L _e		B	L ₂	h			
RMT-ED2020	200 (7.87) × 200 (7.87)	200 (7.87)	200 (7.87)	149 (5.86)	15.2 (1.5+9+1.5+3.2) (0.59)	200 (7.87)	220 (8.66)	15 (0.59)	55 (2.16)	Hex. 8 (0.31)	16kg/35 lb
RMT-ED2525	250 (9.84) × 250 (9.84)	250 (9.84)	250 (9.84)	210 (8.26)		250 (9.84)	270 (10.6)				25kg/55 lb

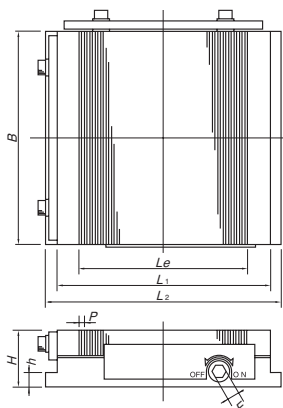
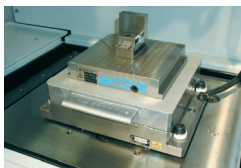
※As for the handle, a hex wrench key is included. ※An electromagnetic type (special specification) is also available.

Model RMWH-ED RECTANGULAR PERMANENT MAGNETIC CHUCK FOR ELECTRIC DISCHARGE MACHINING



RMWH-ED2525

An example of usage



[Application]

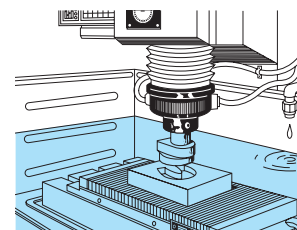
Suitable for securing workpieces during electric discharge machining.

[Features]

- Can be used in liquid.
- A fine pole pitch ensures securing thin and small workpieces firmly.

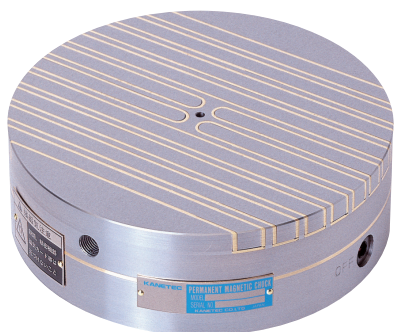
Model	Nominal Size	Work Face			Pole Pitch P	Mounting Face			Height H	Handle Hole E	Mass
		B	L ₁	L _e		B	L ₂	h			
RMWH-ED1018	105 (4.13) × 175 (6.88)	105 (4.13)	175 (6.88)	142 (5.59)	3 (1+2) 0.11 (0.03+0.07)	105 (4.13)	191 (7.51)	10	40	Hex. 8 (0.31)	5.5kg/ 12.1 lb
RMWH-ED1515	150 (5.90) × 150 (5.90)	150 (5.90)	150 (5.90)	118 (4.64)		150 (5.90)	166 (6.53)				7.5kg/ 16.5 lb
RMWH-ED1530	150 (5.90) × 300 (11.8)	150 (5.90)	300 (11.8)	256 (10.0)		150 (5.90)	316 (12.4)	14kg/ 30.8 lb			
RMWH-ED2020	200 (7.87) × 200 (7.87)	200 (7.87)	200 (7.87)	160 (6.29)		200 (7.87)	216 (8.50)	(0.39)	(1.57)		13kg/ 28.6 lb
RMWH-ED2040	200 (7.87) × 400 (15.7)	200 (7.87)	400 (15.7)	346 (13.3)		200 (7.87)	416 (16.3)	25kg/ 55.1 lb			
RMWH-ED2525	250 (9.84) × 250 (9.84)	250 (9.84)	250 (9.84)	208 (8.18)		250 (9.84)	266 (10.4)	20kg/ 44.0 lb			
RMWH-ED3050	300 (11.8) × 500 (19.6)	300 (11.8)	500 (19.6)	442 (17.4)		300 (11.8)	516 (20.3)	53kg/ 116.8 lb			
RMWH-ED3060	300 (11.8) × 600 (23.6)	300 (11.8)	600 (23.6)	541 (21.2)		300 (11.8)	616 (24.2)	(0.55)	(1.77)		63kg/ 138.8 lb

※As for the handle, a hex wrench key is included.



An image of usage on electric discharge machine

Model RMC-ED ROUND PERMANENT MAGNETIC CHUCK WITH JET HOLE



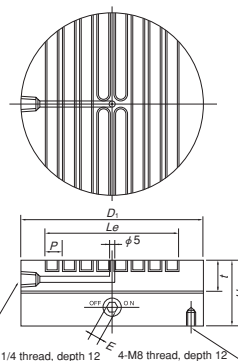
RMC-ED20

[Application]

Suitable for securing workpieces during electric discharge machining.

[Features]

- Can be used in liquid.
- With extra powerful holding, these chucks are suitable for applications that require strong holding power.
- A jet hole is provided for jet-stream machining.
- The bottom face is made flat to allow providing tapped holes for clamp fixtures.
- Counter boring around the jet hole on the attractive face is possible.



[mm (in)]

Model	Nominal Size	Work Face		Pole Pitch P	Face Plate Thickness t	Height H	Handle Hole E	Mass
		D ₁	L _e					
RMC-ED16	160 (6.29)	160 (6.29)	118 (4.64)	15.2 (1.5+9+1.5+3.2) 0.59 (0.05+0.35+0.05+0.12)	29 (1.14)	60 (2.36)	Hex. 8 (0.31)	8.5kg/18 lb
RMC-ED20	200 (7.87)	200 (7.87)	149 (5.86)					14kg/31 lb

※As for the handle, a hex wrench key is included.

ELECTROMAGNETIC CHUCK CONTROLLERS MAGNETIC CHUCKS PERMANENT ELECTROMAGNETIC CHUCKS BLOCKS FOR MC VACUUM CHUCKS PROMELTA* SINE BAR CHUCKS BLOCKS HOLDERS MINICHUCKS HOLDING TOOLS MEASURING TOOL HOLDERS MAGNETIC HOLDERS MAGNETIC TOOLS